

2018

F-650/F-750 SUPER DUTY





Build your business with a proven leader in the commercial truck industry. One with some serious momentum behind it. The 2018 Ford F-650/F-750 Super Duty family of medium-duty trucks are known for their technological innovation and strong work ethic. Giving you the confidence to get the job done, and the flexibility to suit your business needs. So haul it. Pull it. Fill it. No sweat. The Ford F-650/F-750 medium-duty trucks are:

**THE FASTEST-GROWING VOLUME
MEDIUM-DUTY BRAND¹**

**WORK TRUCK MAGAZINE'S "WORK TRUCK
OF THE YEAR" 2 YEARS RUNNING²**

**POWERED BY FORD,
ASSEMBLED IN AMERICA³**

- FORD DESIGNED 6.7L POWER STROKE® V8 TURBO DIESEL AND 6.8L TRITON® V10 GAS
- / FORD DESIGNED TORQSHIFT® HD 6-SPEED AUTOMATIC TRANSMISSION
- / FORD F-650/F-750 PROUDLY MANUFACTURED IN OHIO

**BACKED BY OVER 350
FORD MEDIUM-DUTY SERVICE CENTERS**

- FINDING YOU THE RIGHT VEHICLE / BACKING IT WITH SERVICE,
- MAINTENANCE AND PARTS / UPFITTING AND FLEET EXPERTISE

BUILT FORD TOUGH®

- TESTING SO TOUGH THAT DEVELOPMENTAL VEHICLES WERE DRIVEN BY ROBOTS
- / THOUSANDS OF BODY AND FRAME TWISTS / THOUSANDS OF MILES OF
- ROAD TESTS SIMULATING THE WORST CONDITIONS





QUITE A POWER TRIP.

With either of these 2 proven engine choices. First, a potent B20-capable 6.7L Power Stroke® V8 Turbo Diesel with best-in-class⁴ standard diesel horsepower and torque. Next, our class-exclusive V10 gas engine. Both designed, engineered, built and tested by Ford. The standard Turbo Diesel V8 generates 270 horsepower and 675 lb.-ft. of torque. And with ratings that can go up to 330 horsepower² and 725 lb.-ft. of torque,² matching engine power to your work applications is as easy as ever. Our class-exclusive 6.8L Triton® V10 3-valve gas engine pumps out 320 horsepower and 460 lb.-ft. of torque, and can be equipped to run on compressed natural gas (CNG) or propane autogas. And both engines are mated to our Ford TorqShift® HD 6-speed automatic transmission.

A NEW ACTIVE REGENERATION CONTROL² on diesel-equipped trucks allows you to postpone regenerative cleaning of trapped soot in the diesel particulate filter until it can be performed at a more preferred time or location.

A NEW HIGH-OUTPUT ALTERNATOR² (240 amp) on gasoline-equipped models is designed to ensure you have enough power for work applications with high electrical demands.

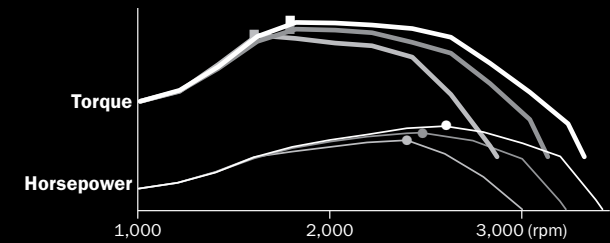
6.7L Power Stroke V8 Turbo Diesel

Horsepower

- 330 @ 2,600 rpm
- 300 @ 2,500 rpm
- 270 @ 2,400 rpm

Torque

- 725 lb.-ft. @ 1,800 rpm
- 700 lb.-ft. @ 1,800 rpm
- 675 lb.-ft. @ 1,600 rpm



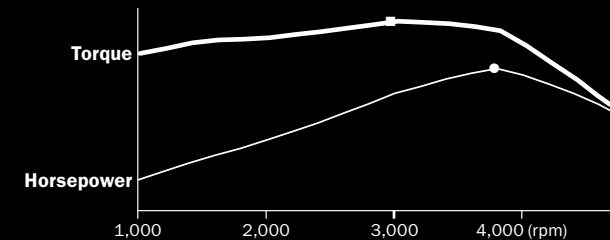
6.8L Triton V10 3-Valve Gasoline

Horsepower

- 320 @ 3,900 rpm

Torque

- 460 lb.-ft. @ 3,000 rpm



POWERED BY FORD FOR SEAMLESS PERFORMANCE As the only Class 6-7 truck manufacturer to give you the choice of diesel or gasoline power, Ford is also the only one to build its own diesel powertrain. Since both engines and the TorqShift HD 6-speed automatic transmission are designed and built by Ford, they offer seamless performance with all chassis components and vehicle calibrations. And when you work as hard as these trucks do, that's critically important.





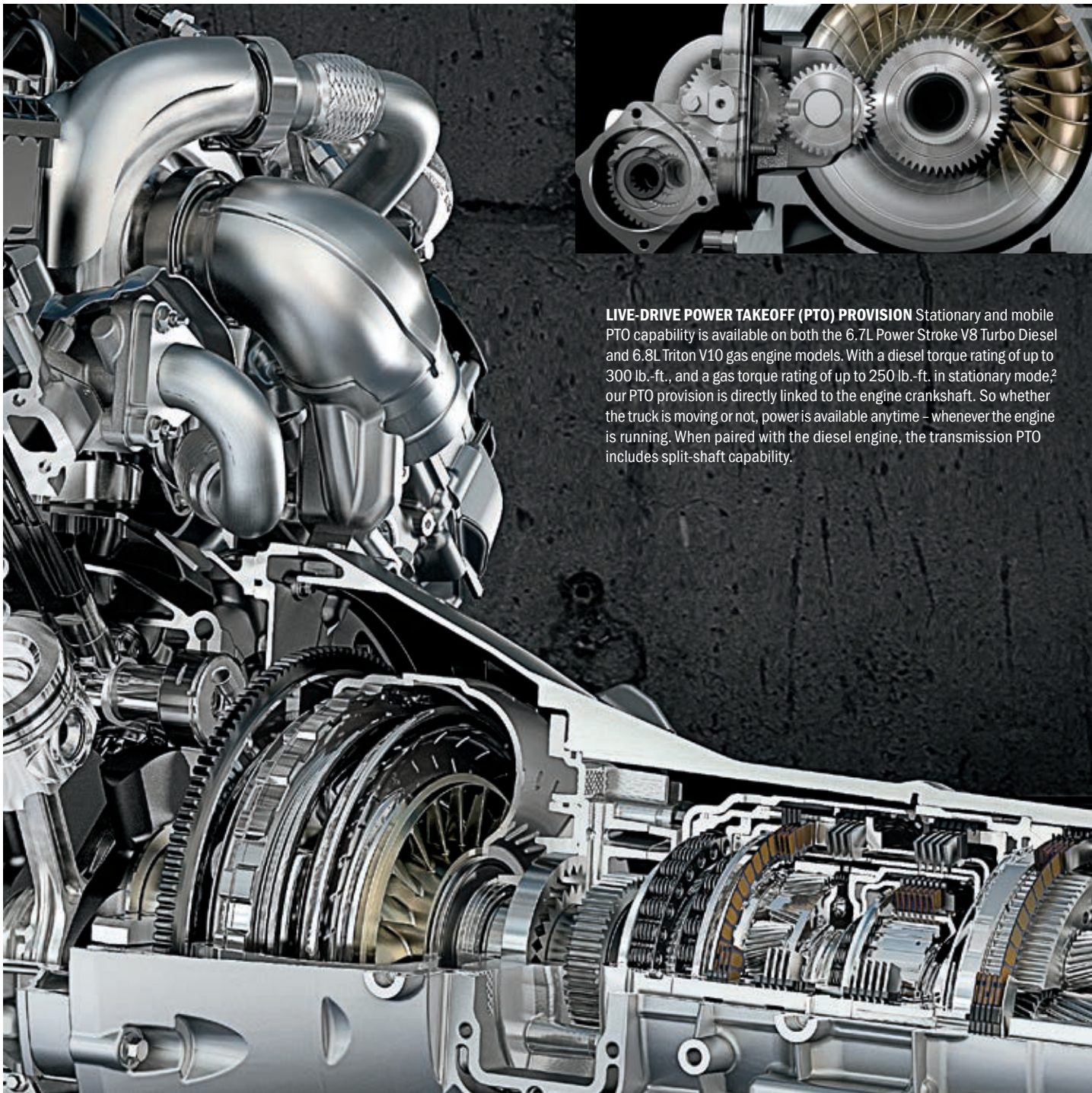
START WITH A SOLID FOUNDATION A rock-solid frame, front stabilizer bar,² long front leaf springs and road-absorbing shock absorbers help F-650/F-750 tractor models deliver a smooth, comfortable ride while maintaining capability.

BEST-IN-CLASS standard diesel horsepower (270) and torque (675 lb.-ft.) are delivered by the 6.7L Turbo Diesel engine. Additional engine outputs of 300 hp and 700 lb.-ft. of torque,² and 330 hp and 725 lb.-ft. of torque,² are also available.

ENHANCE YOUR VISIBILITY around the trailer with sideview mirror widths that range from 96" to 102"² to handle different types of trailers. A power heating feature² in those mirrors can heat the mirror surface to help keep it clear in snowy/icy conditions.

HELP MAINTAIN YOUR CONTROL with a standard brake system on 2018 F-650/F-750 tractor models that includes electronic stability control³ and traction control. With lateral, longitudinal and yaw accelerometers, a steering wheel angle sensor and wheel speed sensors, the system can recognize and assist in limiting understeer, oversteer, excessive roll and jack-knifing events, as well as in loss of traction due to slippery road conditions.

NOTHING PULLS LIKE A TRACTOR. From vocational applications like beverage delivery to heavy towing capability, Built Ford Tough® F-650/F-750 tractor models are ready to haul your heaviest loads – delivering a Gross Combined Weight Rating (GCWR) of up to 50,000 lbs., and a rear axle rating of up to 26,000 lbs.¹ F-650 tractors feature Gross Vehicle Weight Ratings (GVWRs) from 27,500 to 29,000 lbs. F-750 tractors go from 30,200 GVWR all the way up to 37,000 lbs. The standard 6.7L Power Stroke® V8 Turbo Diesel pulls its own weight – and a whole lot more – with a torque rating up to 725 lb.-ft. A rear air suspension² helps smooth out the roughest roads. And standard air brakes bring it all to a controlled, confident halt.



LIVE-DRIVE POWER TAKEOFF (PTO) PROVISION Stationary and mobile PTO capability is available on both the 6.7L Power Stroke V8 Turbo Diesel and 6.8L Triton V10 gas engine models. With a diesel torque rating of up to 300 lb.-ft., and a gas torque rating of up to 250 lb.-ft. in stationary mode,² our PTO provision is directly linked to the engine crankshaft. So whether the truck is moving or not, power is available anytime – whenever the engine is running. When paired with the diesel engine, the transmission PTO includes split-shaft capability.

TORQSHIFT® HD 6-SPEED AUTOMATIC TRANSMISSION.

This beast is our proven standard. It includes a 3-plate, 2-stage torque converter that's been designed to handle the substantial horsepower and torque forces it will encounter in F-650/F-750 work applications. Robust gearsets are fortified by extra pinion gears, and a high-efficiency fluid filter has a fluid change interval of 150,000 miles.

LOW-SPEED LOCKUP CAPABILITY (down to 900 rpm) on the 6-speed transmission's torque converter helps both engines work efficiently at low rpm. Sinter-brazed pinion carriers help it manage the extreme low-end torque of the diesel engine, as well as the high shift speeds of the gas engine.

SMOOTH, EFFICIENT PERFORMANCE comes courtesy of a multi-segment friction clutch design, which reduces power loss while maximizing oil flow and transmission productivity.

A 5-YEAR/250,000-MILE LIMITED WARRANTY¹ backs every 6.7L Power Stroke® V8 Turbo Diesel engine and TorqShift HD powertrain that leaves the factory. The 6.8L Triton® V10 3-valve gas engine is backed by a 5-year/100,000-mile limited warranty.¹

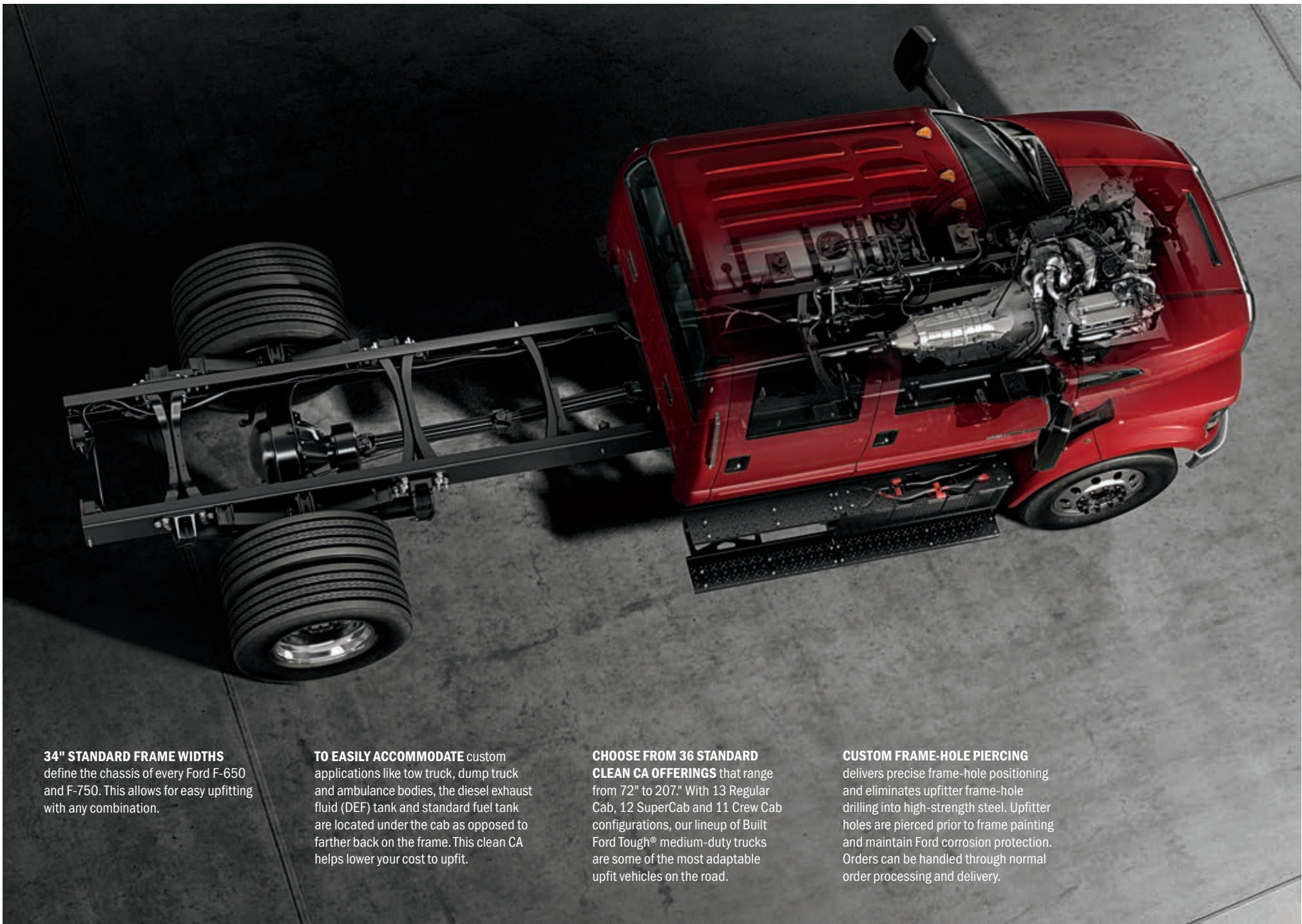


WE BEGIN WITH THE END IN MIND.

Ease of upfitting. A) Diesel engine fuel tank choices begin with the standard aluminum fuel tank (50-gal. on Regular Cab and 65-gal. on SuperCab and Crew Cab diesels) and 8-gal. DEF tank, mounted under the driver's side for a clean CA. Extend your diesel range with 115-gal. dual rectangular aluminum fuel tanks¹ (65-gal. left-hand tank and 50-gal. right-hand tank). B) A body-builder wiring harness reduces the amount of wiring for upfitters to route. C) Exhaust systems vary, from standard horizontal mufflers to under-cab vertical switchback style.¹ Under-cab battery box placement (adjacent to exhaust) allows for larger fuel and urea tanks without encroaching in CA area. D) Motorcraft® batteries run from 750-900 cold-cranking amps (CCA) depending on engine choice and model variations.

There is also a range of options to help meet your capability needs. E) A wide range of axle capacities gives you plenty of options. F-650/F-750 front axle ratings range from 8,500 to 14,000¹ lbs. Rear ratings vary from 13,500 to 26,000¹ lbs. F) The 750-watt engine block heater¹ helps produce proper engine startup lubrication if used when temperatures drop below 10°F.





34" STANDARD FRAME WIDTHS define the chassis of every Ford F-650 and F-750. This allows for easy upfitting with any combination.

TO EASILY ACCOMMODATE custom applications like tow truck, dump truck and ambulance bodies, the diesel exhaust fluid (DEF) tank and standard fuel tank are located under the cab as opposed to farther back on the frame. This clean CA helps lower your cost to upfit.

CHOOSE FROM 36 STANDARD CLEAN CA OFFERINGS that range from 72" to 207." With 13 Regular Cab, 12 SuperCab and 11 Crew Cab configurations, our lineup of Built Ford Tough® medium-duty trucks are some of the most adaptable upfit vehicles on the road.

CUSTOM FRAME-HOLE PIERCING delivers precise frame-hole positioning and eliminates upfitter frame-hole drilling into high-strength steel. Upfitter holes are pierced prior to frame painting and maintain Ford corrosion protection. Orders can be handled through normal order processing and delivery.

A STRONG BUSINESS MODEL. With 3 cabs to choose from, including 2-door Regular Cab or 4-door SuperCab and Crew Cab, meeting your vocational needs in F-650/F-750 is as easy as ever. You'll also enjoy a wide range of seating options and configurations, comfortable driver and front-passenger air-ride seats,¹ and wide-open doors.

SYNC® Just a quick touch of a button and the sound of your voice is all that's needed for SYNC voice-activated technology¹⁻² to help you make and receive calls. And voice-activated music commands let you say what you want to hear - from your phone, MP3 player or USB device. All in a comfortable cabin that's surprisingly quiet.

PRODUCTIVE CONVENIENCES range from dual sunglasses holders¹ to a center console¹ with dual cupholders, to 12V powerpoints, a 110V/150W power outlet¹⁻³ and a USB port¹ to help keep your tools and mobile phones charged. Plus, a cavernous glove box helps keep important manuals, schedules and other small items close at hand.

FACTORY-INSTALLED UPFITTER SWITCHES¹⁻³ are integrated into the instrument panel and offer a convenient way to connect aftermarket accessories - such as a winch, lights, strobes, and more - to the vehicle's electrical system.





FORD COMMERCIAL VEHICLE CENTER. There's a standard of excellence at your local Ford Commercial Vehicle Center dealer, where our certified experts are ready to help you find the right vehicle for your commercial application. The goal on every visit: to offer you an industry-leading sales, service and finance experience for your commercial fleet.

After matching your needs with the right upfit body or accessory, our expert knowledge will help ensure that it is built and installed to your precise specifications. We'll also recommend the best way to finance your commercial investment, as well as maximize your "up-time" after the sale with prompt, specialized service.

Our Service and Parts Department offers extended hours and service discounts. Plus, a Parts Advantage program helps us keep the fastest-moving fleet parts in your area in stock.

We're excited to share this commitment to exceptional customer service with you. And with an expanded network of 678 certified dealers, there's bound to be a Ford Commercial Vehicle Center dealer near you. For more information, visit fordcommercialvehiclecenter.com.

STANDARD FEATURES

Mechanical

6.7L Power Stroke® V8 Turbo Diesel (3 hp/torque rating options: 270/675 [99C], 300/700 [99E], and 330/725 [99X])

6.8L Triton® V10 3-valve gas (n/a on Tractor)

Ford TorqShift® HD 6-speed automatic transmission (without PTO provision)

12V Comstar® starting motor (diesel)

12V Denso® starting motor (gas)

8-gal. DEF tank (diesel)

Air cleaner

Alternator – 200-amp, extra-heavy-duty, 12V, Denso, brushless, pad-mounted (diesel)

Alternator – 175-amp, extra-heavy-duty, 12V, Mitsubishi® brushless, pad-mounted (gas)

Batteries – 750-amp (CCA), 12V, Motorcraft® (2 for a total of 1,500 CCA; diesel)

Battery – 900-amp (CCA), 12V, Motorcraft (gas)

Battery box – Right-hand frame-mounted under cab step

BorgWarner viscous fan clutch (diesel)

Brakes – Air brake system with 4-wheel, 4-channel Anti-Lock Brake System (ABS), traction control, and hand control valve for trailer brake (Tractor)

Brakes – Bosch® Hydro-Max® hydraulic brake system with 4-wheel, 4-channel Anti-Lock Brake System (ABS) (n/a on Tractor)

Donaldson® single-element air cleaner with restriction indicator (diesel)

Driveshaft – Dana base

Emergency flashers – 4-way

Engine coolant with red, extended-life Organic Acid Technology (OAT), and -40°F freeze-protection rating

Engine exhaust brake (diesel)

Exhaust – Single, switchback-style, horizontal; frame-mounted right side under cab with outside of frame rail rear discharge (diesel)

Exhaust – Single, horizontal, catalytic converter, frame-mounted right side back of cab; downward-facing outlet tip (gas)

Frame-mounted body-builder wiring at back of cab (n/a on Tractor)

Front parabolic taper-leaf springs with double-acting shock absorbers

Fuel/water separator (diesel)

Gearshift interlock key¹

Radiator – Aluminum with in-tank transmission cooler

Rear suspension with multi-leaf rear springs

SAE blade-type fuses

Wheel seals (front and rear axle), oil-lubricated wheel bearings (front and rear)

Fuel Tanks

50-gal. single rectangular aluminum, frame-mounted on left side (Regular Cab diesel)

65-gal. single rectangular aluminum, frame-mounted on left side (SuperCab and Crew Cab diesel)

50-gal. single rectangular steel, frame-mounted on left side (Regular Cab and SuperCab gas)

60-gal. single rectangular steel, frame-mounted on left side (Crew Cab gas)

Interior Cab Equipment

AM/FM stereo with auxiliary audio input jack, clock and 2 speakers

12V powerpoints (2)

Air conditioning – Manual with integral heater and defroster

Air registers with positive shut-off

Assist handle – A-pillars

Assist handle – B-pillars (Crew Cab)

Coat hooks (2)

Cruise control with steering wheel-mounted controls

Flooring – Black vinyl

Gauge cluster with electronic speedometer (mph/kph), oil pressure, coolant temperature, DEF gauge (diesel only), fuel gauge, tachometer, indicator lights, enhanced 3-button message center with odometer, hour meter, trip odometer, distance to empty for fuel, average fuel economy and warning messages

Glove box at right-hand instrument panel

Left-/right-hand front-window demisters

Molded cloth headliner

Multifunction, non-canceling turn signal switch (Tractor)

Multifunction, self-canceling turn signal switch (n/a on Tractor)

Oil maintenance minder

Rear-mounted dome lamp with integral map lights (Regular Cab/Crew Cab)

Scuff plates – Black molded-in-color

Steering wheel – Black vinyl

Sun visors – Driver and front-passenger, vinyl with passenger-side mirror

Upfitter switches (4) located in center IP with connector access located in engine compartment; includes 10-, 15-, and two 25-amp switches (diesel)

Exterior Cab Equipment

Air/electric lines (12' coiled; Tractor)

Assist handles – B-pillar on all models, C-pillar on Crew Cab

Body-builder wiring harness, back of cab at frame

Bumper – Front; full-width, black

Dual-note electric horn

Grille – Painted black, plastic

Headlamps – Aero-type with front side marker lamps and reflectors

Hood – Frame-mounted, front-end-tilting fiberglass hood and fenders assembly with torsion-bar assist (includes integrated noise shield, inner splash shields and mud flaps)

Lamps – Roof marker/clearance, amber lenses (5)

Mirrors – Black, dual rectangular, manually adjustable/folding with integrated spotter mirrors, sail-type, 96"-wide spacing

Pogo stick (Tractor)

Side repeat flasher

Taillamps with integrated stop, turn signal, backup and license plate

Tapered frame ends (Tractor)

Tow hooks (2) – Front, black, frame-mounted

Trailer charge valve (Tractor)

Trailer module – 7-pin, mounted at back of cab (Tractor)

Window – Rear, fixed, solar-tinted

Windshield – Solar-tinted with laminated glass

Windshield wipers – 2-speed intermittent with washer

Safety & Security

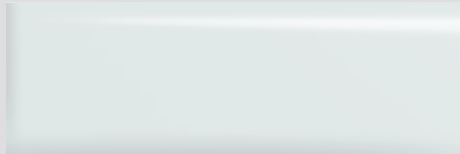
Belt-Minder® safety belt reminder (chime and flashing warning light on instrument panel if driver's safety belt isn't buckled)

Electronic stability control¹ (Tractor and F-750 diesel)

Safety belts – Color-keyed with fixed D-rings on all outboard seating positions (Regular Cab)²

Safety belts – Color-keyed with outboard front-seat adjustable D-rings (SuperCab/Crew Cab)²

EXTERIORS



Oxford White



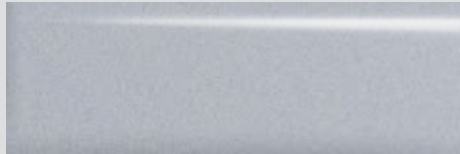
Bold Yellow



Tangier Orange



Blue Jeans¹



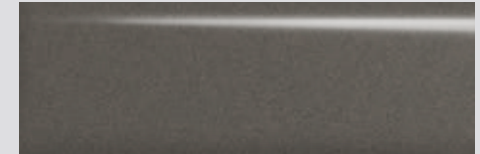
Ingot Silver¹



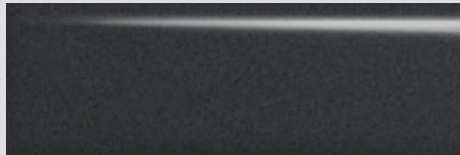
School Bus Yellow



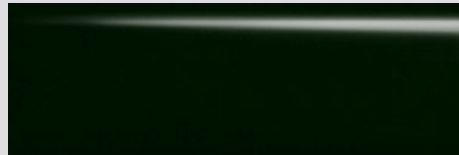
Race Red



Stone Gray¹



Magnetic¹



Green Gem¹



Shadow Black

Colors are representative only.
See your dealer for actual paint/trim options.

INTERIORS



Steel Gray HD Vinyl: Standard



Steel Gray Cloth: Optional

WHEELS



White Powder-Coated Steel
8- or 10-hole (front)
Standard



Polished Aluminum
(front)
Optional

CAB OPTIONS

REGULAR CAB



SUPERCAB



CREW CAB



AVAILABLE FEATURES

Axle & Suspension – Front

EmGard® SAE 50 synthetic lubricant

Axle & Suspension – Rear

Air suspension (diesel)

Air suspension dump valve (diesel)

Additional air suspension leveling valve (diesel)

Double-acting shock absorbers
(included with air suspension on diesel)¹

EmGard 75W-90 synthetic lubricant

Brakes & Brake Equipment

Air brake chambers – Spring-style
(relocated to rear of axle; diesel; n/a on Pro Loader®)

Air brake system with ABS, 4-channel (diesel)

Air brake system with ABS and traction control, 4-channel (diesel)

Air compressor – Bendix® Tu-Flo® 550 Compressor 13.2-CFM (for stand-alone air source with hydraulic brakes; included with air brake systems; required with air suspension; diesel only)¹

Air dryer – Bendix AD/IP® with heater mounted on left frame rail back of cab (diesel)

Automatic drain valve – Bendix DV-2™ with heater on diesel¹

Hydraulic Brake System – Bosch® Hydro-Max® with traction control (n/a on Tractor)

Trailer Connections

4-wheel trailer Air Brake Package (includes air lines to rear of frame, hand control valve and tractor protection valve; diesel only; n/a on Tractor)¹

7-way trailer connection socket, mounted at rear of frame, for combined trailer stop/tail/turn/marker light circuits (n/a on Tractor)¹

7-way trailer connection socket, mounted at rear of frame, for separate trailer stop/tail/turn/marker light circuits (n/a on Tractor)¹

7-way trailer connection socket, mounted at rear of frame, wired for turn signals combined with stop (compatible with trailers that use combined stop/tail/turn lights; diesel only; n/a on Tractor)¹

7-way trailer connection socket, mounted at rear of frame, wired for turn signals independent to stop (compatible with trailers that have amber or side turn lights with independent stop/turn; diesel only; n/a on Tractor)¹

Fuel Tanks

55-gal. single rectangular aluminum, frame-mounted on left side (Regular Cab diesel; n/a on Pro Loader)

60-gal. single rectangular steel, frame-mounted on left side (Regular Cab and SuperCab gas)

65-gal. single rectangular aluminum, frame-mounted on left side (Regular Cab diesel)

115-gal. dual rectangular aluminum
(65-gal. left-hand tank and 50-gal. right-hand tank; diesel)

Engine Equipment

Active regeneration control (diesel)

CNG/Propane Gaseous Engine Prep Package: hardened intake valves and valve seats (gas)

Engine block heater – Phillips,750-watt

Engine idle shutdown timer with 5-, 10-, 15- and 20-minute options

Manual regeneration initiation (driver interface in message center; diesel)

Top road speed limiter (65- and 70-mph options)

Driveline & Clutches

Driveshaft upgrade (diesel)

Transmission – Mobile and stationary mode power takeoff (PTO) provision

Exhaust

Switchback single, horizontal: frame-mounted outside right rail under cab with vertical exit (diesel)

Torpedo single, horizontal: frame-mounted right side back of cab with underbody exit in front of axle (diesel)

Electrical

Alternator – 220-amp, 12V (diesel)

Alternator – Dual heavy-duty, 357-amp total, 12V (diesel)

Alternator – Extra-heavy-duty 240-amp, 12V (gas)¹

Batteries – 900 CCA, 12V Motorcraft® (2 for a total of 1,800 CCA)

Batteries – 900 CCA, 12V Motorcraft (3 for a total of 2,700 CCA; diesel)

Batteries – Temporary mount at back of cab (dual 900 CCA or triple 900 CCA only, includes 10' of additional cable; diesel; n/a on Tractor)

Body-builder wiring to end of frame (n/a on Tractor)

Daytime running lamps

Electric, 102-decibel backup alarm

Remote-mounted jump-start stud¹

Taillamps delete (does not omit cable to end of frame; n/a on Tractor)¹

Interior Cab Equipment

Premium AM/FM stereo/single-CD player with MP3 capability, auxiliary audio input jack, steering wheel-mounted audio controls, clock and 4 speakers

Audio Delete Package: deletes radio and all associated parts (includes radio and auxiliary audio input jack covers)

Audio Prep Package: deletes radio and auxiliary audio input jack, but retains all associated parts

110V/150W power outlet

Air conditioning delete; fresh air heater and defroster only¹

Anti-theft system

Ford Telematics™ powered by Telogis® – Fleet tracking system²

Keys – Keyed-alike¹

Rear seat delete (SuperCab and Crew Cab)

Rearview mirror

Remote Keyless Entry System with 2 key fobs¹

SYNC® voice-activated, in-vehicle connectivity system (includes USB port and steering wheel-mounted SYNC controls)¹

Upfitter switches (4) located in center IP with connector access located in engine compartment; includes 10-, 15-, and two 25-amp switches (gas)

Voltmeter (located in message center)



AVAILABLE FEATURES (continued)

Exterior Cab Equipment

Air horn, black, single-trumpet, mounted on frame rail back of bumper (diesel)

Bumper – Front 3" extension
(n/a with front, swept-back bumper)

Bumper – Front, full-width, chrome-plated steel
(included with Exterior Appearance Package)

Bumper – Front, swept-back, Dark Shadow Gray-painted-steel¹

Frame reinforcement (F-750 only; n/a on Tractor)¹

Front bumper delete

Front stabilizer bar

Grille – Chrome (includes chrome headlamp bezels)

Grille – Fixed, black/gray

Integral front frame extension – 20" in front of grille¹

Lamps – Roof marker/clearance, clear lenses (5)

Lamps – Roof marker/clearance delete

Mirrors – Black, dual rectangular, manually adjustable/
folding and heated with integrated spotter mirrors,
sail-type, 96"-wide spacing¹

Mirrors – Black, dual rectangular, power-adjustable/
manually folding and heated with integrated spotter
mirrors, sail-type, 96"-wide spacing¹

Mirrors – Chrome caps, dual rectangular, manually
adjustable/folding with integrated spotter mirrors,
sail-type, 96"-wide spacing

Mirrors – Chrome caps, dual rectangular, manually
adjustable/folding and heated with integrated spotter
mirrors, sail-type, 96"-wide spacing¹

Mirrors – Chrome caps, dual rectangular, power-adjustable/
manually folding and heated with integrated spotter mirrors,
sail-type, 96"-wide spacing¹

Mirrors – Black, dual rectangular, manually adjustable/folding
with integrated spotter mirrors, sail-type, 102"-wide spacing

Mirrors – Black, dual rectangular, manually adjustable/
folding and heated with integrated spotter mirrors, sail-type,
102"-wide spacing¹

Mirrors – Black, dual rectangular, power-adjustable/
manually folding and heated with integrated spotter
mirrors, sail-type, 102"-wide spacing¹

Mirrors – Chrome caps, dual rectangular, manually
adjustable/folding with integrated spotter mirrors, sail-type,
102"-wide spacing

Mirrors – Chrome caps, dual rectangular, manually
adjustable/folding and heated with integrated spotter
mirrors, sail-type, 102"-wide spacing¹

Mirrors – Chrome caps, dual rectangular, power-adjustable/
manually folding and heated with integrated spotter mirrors,
sail-type, 102"-wide spacing¹

Mirrors – Trailer tow, power-telescoping with power glass,
power-folding, heated, includes manual convex integrated
spotter mirrors, integrated clearance lamps and turn signal
indicators, 96"-wide spacing¹

Mud flap holders – Rear, without flaps

Mud flaps – Rear¹

Special-rating GVWR (limited to 25,999 lbs.; straight frame)

Special-rating GVWR
(limited to 33,000 lbs.; F-750 straight frame diesel only)

Tow hooks delete

Window – Rear, sliding

Packages

Ambulance Prep Package (available with 300-hp Power Stroke®
V8 Turbo Diesel engine): special EPA calibration for emergency
vehicles, 357-amp dual heavy-duty alternators, and three
900 CCA batteries for 2,700 CCA total (n/a on Tractor)

Beverage Delivery Package: body-builder wiring with 6'
additional length to accommodate drop-frame beverage
body application

Exterior Appearance Package: full-width chrome-plated
steel front bumper and chromed fender badges

Fire/Rescue Prep Package (available with 300-hp Power Stroke
V8 Turbo Diesel engine): special EPA calibration for emergency
vehicles, 357-amp dual heavy-duty alternators, and three
900 CCA batteries for 2,700 CCA total (n/a on Tractor)

Interior Appearance Package: front-mounted overhead
console with dual sunglasses holders and front map lights,
door-trim panels, map pockets, chrome air registers, 2nd-row
bench seat (Crew Cab), 2nd-row flip-up seats with cushions
and bolsters (SuperCab), perforated cab back panel
(Regular Cab and Crew Cab), and Power Equipment Package

Power Equipment Package: power front side windows,
power rear side windows (Crew Cab), manual rear side
windows (SuperCab), power door locks, and door-trim
panels (included in Interior Appearance Package)

**FORD TELEMATICS POWERED
BY TELOGIS^{2,3}** helps you run your
business efficiently, and provide
drivers with feedback on the road.

Built-in, factory-installed,
comprehensive diagnostic
technology provides a 360°
view of real-time vehicle
metrics and driver behavior
to help increase productivity.

An easy-to-use portal provides
insights, dashboards and reports
to help fleet managers to positively
transform their fleet businesses.

Mobile connectivity links workers
in the field with fleet managers
to coordinate Department
of Transportation compliance
(including hours of service and
driver vehicle inspection reports),
work orders and more.



FRAMES

Model	Frame Order Code						
	533	534	535	536	537	538	539
F-650 Pro Loader® gas	—	—	—	—	S	—	—
F-650 Pro Loader diesel	—	—	—	—	S	—	—
F-650 gas	0	S	0	0	—	—	—
F-650 diesel	0	S	0	0	—	—	—
F-650 Tractor	—	—	—	S	—	—	—
F-750 gas	—	—	S	0	—	0	0
F-750 diesel	—	—	S	0	—	0	0
F-750 Tractor	—	—	0	S	—	0	—
Depth (in.)	9.125	10.125	10.250	10.125	9.125	10.250	10.375
Width (in.)	3.062	3.062	3.092	3.580	3.062	3.610	3.705
Thickness (in.)	0.312	0.312	0.375	0.312	0.312	0.375	0.438
Yield (psi)	80,000	50,000	80,000	120,000	80,000	120,000	120,000
Maximum section modulus (cu. in.)	10.75	12.64	15.14	14.18	10.75	16.98	20.11
Maximum resisting bending moment (in.-lbs.)	860,000	632,000	1,211,000	1,701,600	860,000	2,037,600	2,413,200

WHEEL AVAILABILITY

Wheel (in.)	F-650 Pro Loader Gas	F-650 Pro Loader Diesel	F-650 Gas	F-650 Diesel	F-650 Tractor	F-750 Gas	F-750 Diesel	F-750 Tractor
19.5 x 6.75 8-lug white powder-coated steel	S	S	0	0	—	—	—	—
19.5 x 7.5 10-lug white powder-coated steel	—	0	—	0	—	—	—	—
19.5 x 7.5 10-lug polished aluminum ¹	—	0	—	0	—	—	—	—
22.5 x 7.5 10-lug white powder-coated steel	—	—	S	S	S	S	S	S
22.5 x 8.25 10-lug white powder-coated steel	—	—	0	0	0	0	0	0
22.5 x 8.25 10-lug polished aluminum ¹	—	—	0	0	0	0	0	0

TIRE AVAILABILITY

Tire Size ²	F-650 Pro Loader Gas	F-650 Pro Loader Diesel	F-650 Gas	F-650 Diesel	F-650 Tractor	F-750 Gas	F-750 Diesel	F-750 Tractor
245/70R19.5G	0	S	0	0	—	—	—	—
245/70R19.5H	S	0	0	0	—	—	—	—
265/70R19.5G	0	0	0	0	—	—	—	—
11R22.5G	—	—	S	S	S	S	S	S
11R22.5H	—	—	0	0	0	0	0	0
255/70R22.5H	—	—	0	0	0	0	0	0
275/80R22.5G	—	—	0	0	0	0	0	0
275/80R22.5H	—	—	0	0	0	0	0	0
295/80R22.5H	—	—	—	—	—	0	0	0

DIMENSIONS³

Regular Cab (in.)
SuperCab (in.)
Crew Cab (in.)

Overall height (at curb)

RC 89.6 – 94.7
SC 89.6 – 94.7
CC 89.6 – 94.5

Width at front fenders

RC 95.5
SC 95.5
CC 95.5

Frame rail width

RC 34.0
SC 34.0
CC 34.0

Front bumpers to back of cab

RC 114.4
SC 135.4
CC 149.9

Load floor height (at curb)

RC 33.1 – 39.3
SC 33.1 – 39.3
CC 33.1 – 39.2

Front bumper to center of front axle

RC 40.4
SC 40.4
CC 40.4

Wheelbase

RC 146.0 – 281.0
SC 167.0 – 281.0
CC 182.0 – 278.0

Center of rear axle to end of frame

RC 39.0 – 120.0
SC 39.0 – 120.0
CC 39.0 – 100.0

Back of cab to center of front axle

RC 74.1
SC 95.0
CC 109.5

Back of cab to center of rear axle

RC 72.0 – 207.0
SC 72.0 – 186.0
CC 72.0 – 168.0



AXLES

Model	Front Axle Rating (lbs.)			
	8,500	10,000	12,000	14,000
F-650 Pro Loader® gas	S	—	—	—
F-650 Pro Loader diesel	S	—	—	—
F-650 gas	S	0	—	—
F-650 diesel	S	0	—	—
F-650 Tractor	—	S	—	—
F-750 gas	—	S	0	—
F-750 diesel	—	S	0	0
F-750 Tractor	—	S	0	0

Model	Rear Axle Rating (lbs.) - Single-Speed					
	13,500	17,500	19,000	21,000	23,000	26,000
F-650 Pro Loader gas	S	0	—	—	—	—
F-650 Pro Loader diesel	S	0	—	—	—	—
F-650 gas	—	S	0	—	—	—
F-650 diesel	—	S	0	—	—	—
F-650 Tractor	—	S	0	—	—	—
F-750 gas	—	—	—	S	—	—
F-750 diesel	—	—	—	S	0	0
F-750 Tractor	—	—	—	S	0	0

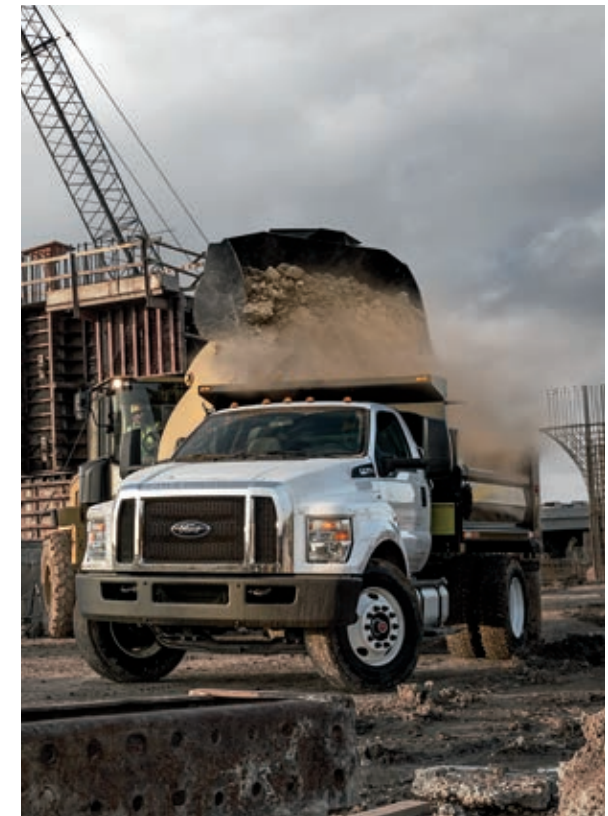
Model	Rear Axle Rating (lbs.) - 2-Speed			
	21,000			
F-750 diesel	0	—	—	—
F-750 Tractor	0	—	—	—

SUSPENSIONS

Model	Front Spring Rating (lbs.)				
	8,500	10,000	12,000	13,200	14,000
F-650 Pro Loader gas	S	0	—	—	—
F-650 Pro Loader diesel	S	—	—	—	—
F-650 gas	S	0	0	—	—
F-650 diesel	S	0	0	—	—
F-650 Tractor	—	S	0	—	—
F-750 gas	—	S	0	0	—
F-750 diesel	—	S	0	0	0
F-750 Tractor	—	S	0	0	0

Model	Rear Multi-Leaf Springs Rating (lbs.)				
	15,500	19,000	21,000	23,000	31,000
F-650 Pro Loader gas	S	0	—	—	—
F-650 Pro Loader diesel	S	0	—	—	—
F-650 gas	—	S	0	—	—
F-650 diesel	—	S	0	—	—
F-650 Tractor	—	S	0	—	—
F-750 gas	—	—	S	0	—
F-750 diesel	—	—	S	0	0
F-750 Tractor	—	—	S	0	0

Model	Rear Air Suspension Rating (lbs.)			
	12,000	19,000	21,000	23,000
F-650 Pro Loader diesel	0	0	—	—
F-650 diesel	—	0	0	—
F-650 Tractor	—	0	0	—
F-750 diesel	—	—	0	0
F-750 Tractor	—	—	0	0



WEIGHT RATINGS & WHEELBASE/CAB-TO-AXLE RANGES

Model	GVWR (lbs.)	GCWR (lbs.)	Curb Weight (lbs.)	Wheelbase/Cab-to-Axle Range (in.)		Crew Cab	Options		
				Regular Cab	SuperCab		Regular Cab	SuperCab	Crew Cab
F-650 Pro Loader gas	22,000 - 26,000	37,000	8,748 - 9,527	158/84 - 242/168	179/84 - 239/144	194/84 - 254/144	5	3	3
F-650 Pro Loader diesel	22,000 - 26,000	50,000	9,407 - 11,628	158/84 - 242/168	179/84 - 239/144	194/84 - 254/144	5	3	3
F-650 gas	25,600 - 29,000	37,000	9,618 - 10,533	158/84 - 260/186	179/84 - 263/168	182/72 - 278/168	11	10	11
F-650 diesel	25,600 - 29,000	50,000	10,278 - 11,947	158/84 - 260/186	179/84 - 263/168	182/72 - 278/168	11	10	11
F-650 Tractor	27,500 - 29,000	50,000	11,062 - 11,573	146/72 - 158/84	167/72 - 179/84	182/72	2	2	1
F-750 gas	31,000 - 33,000	37,000	9,748 - 10,672	158/84 - 281/207	179/84 - 281/186	182/72 - 266/156	12	11	10
F-750 diesel	31,000 - 37,000	50,000	10,408 - 12,166	158/84 - 281/207	179/84 - 281/186	182/72 - 266/156	12	11	10
F-750 Tractor	31,000 - 37,000	50,000	11,274 - 11,785	146/72 - 158/84	167/72 - 179/84	182/72	2	2	1



SEATING CHART

Standard Front		Suspension System	Position
	30% width high-back bucket with manual lumbar, integrated head restraint, fore/aft adjustment, reclining, armrest and floor-mounted mini-console	Fixed-spring	Driver
	30% width high-back bucket with integrated head restraint, fore/aft adjustment, reclining and armrest	Fixed-spring	Passenger
Optional Front			
	30/70 split full-width, high-back bucket driver's seat, fore/aft adjustment and reclining; includes driver's seat manual lumbar, integrated head restraints and fold-down armrest with tray and cupholders	Fixed-spring	Driver/2-passenger
	Air suspension with integral pump high-back bucket driver's seat and fixed-spring 2-passenger bench seat; includes driver's seat manual lumbar, integrated head restraints and fold-down armrest with tray and cupholders ¹	Air suspension with integral pump/fixed-spring	Driver/2-passenger
	Air-ride high-back bucket driver's seat and fixed-spring 2-passenger bench seat; includes driver's seat manual lumbar, integrated head restraints and fold-down armrest with tray and cupholders ¹	Air-ride/fixed-spring	Driver/2-passenger
	High-back bucket with integrated head restraint, fore/aft adjustment, reclining, manual lumbar and armrest	Fixed-spring	Driver
	Air suspension with integral pump high-back bucket with manual lumbar, integrated head restraint and armrest ¹	Air suspension with integral pump	Driver
	Full air-ride high-back bucket with air lumbar, integrated head restraint and armrest ¹	Air-ride	Driver
	Air suspension with integral pump high-back bucket driver's seat and fixed-spring high-back bucket passenger seat; includes armrests, driver's seat manual lumbar, integrated head restraints and floor-mounted mini-console ¹	Air suspension with integral pump/fixed-spring	Driver/passenger
	Air suspension with integral pump high-back buckets with driver's seat manual lumbar, integrated head restraints, armrests and floor-mounted mini-console ¹	Air suspension with integral pump	Driver/passenger
	Air-ride high-back bucket driver's seat and fixed-spring high-back bucket passenger seat; includes armrests, driver's seat air lumbar, integrated head restraints and floor-mounted mini-console ¹	Air-ride/fixed-spring	Driver/passenger
	Full air-ride high-back buckets; includes armrests, driver's seat air lumbar, integrated head restraints and floor-mounted mini-console ¹	Air-ride	Driver/passenger
	40/20/40 split, full-width, fore/aft adjustment, reclining, with adjustable head restraints; driver's seat includes manual lumbar; fixed center seat includes fold-down armrest with tray and cupholders	Fixed-spring	Driver/center/passenger
Standard Rear			
	60/40 split, 3-passenger rear bench, full-width, fold-up; converts to load floor (SuperCab)	High-density foam	Rear bench
	60/40 split, 3-passenger full-size rear bench, full-width with folding back (Crew Cab)	Fixed-spring	Rear bench



Standard 30% width high-back bucket driver and front-passenger bucket seats.



Optional 40/20/40 split driver and front-passenger bucket seats.

Ford Commercial Vehicle Center. Each of the 678 dealerships in our Commercial Vehicle Center (CVC) network is committed to providing quality commercial-oriented products and service, as well as special financing and billing arrangements, to businesses that rely on Ford products. As a CVC customer, your business vehicles receive priority service at your CVC dealership to help get your vehicle back on the road quickly.

Financial Services. Our commercial purchase plans and lines of credit offer attractive rates, negotiable terms and business-friendly options. If you prefer to lease, our CommercialLeaseSM programs offer a wide variety of package options to meet your needs. For additional information, please visit our website at fordcredit.com/comlend.

Ford ProtectTM Extended Service Plans. Whether you purchase or lease your Ford vehicle, insist on genuine Ford Protect extended service plans. Ford Protect has a variety of plans to give you peace-of-mind protection whether you want vehicle component or maintenance coverage. Plus, they are fully backed by Ford and honored at all Ford dealerships in the U.S., Canada and Mexico. When you visit your dealer, insist on genuine Ford Protect extended service plans.

Ford Original Accessories. They're warranted for whichever provides you the greatest benefit: 24 months/unlimited mileage, or the remainder of your Bumper-to-Bumper 3-year/36,000-mile New Vehicle Limited Warranty. Ford Licensed Accessories (FLA) are warranted by the accessory manufacturer's warranty. FLA are designed and developed by the accessory manufacturer and have not been designed or tested to Ford Motor Company engineering requirements. Contact your Ford Dealer for details and/or a copy of all limited warranties.

BENDIX is a registered trademark of Knorre-Bremse used under license by Bendix Commercial Vehicle Systems LLC. Tu-Flo[®] AD/IP[®] and DV-2[™] are registered trademarks of Bendix Commercial Vehicle Systems LLC. Comstar is a registered trademark of COMSTAR Automotive Technologies Pvt Ltd. Denso is a registered trademark of Denso International America, Inc. Donaldson is a registered trademark of Donaldson Company, Inc. EmGard is a registered trademark of Cognis IP Management GmbH. Hydro-Max is a registered trademark of Robert Bosch GmbH. Mitsubishi is a registered trademark of the Mitsubishi Corporation.

Comparisons based on competitive models (Class 6-7 Conventional Chassis Cabs based on Ford segmentation), publicly available information and Ford certification data at time of release. Vehicles may be shown with optional and aftermarket equipment. Features may be offered only in combination with other options or subject to additional ordering requirements/limitations. Dimensions and capacity ratings shown may vary due to optional features and/or production variability. Information is provided on an "as is" basis and could include technical, typographical or other errors. Ford makes no warranties, representations, or guarantees of any kind, express or implied, including but not limited to, accuracy, currency, or completeness, the operation of the information, materials, content, availability, and products. Ford reserves the right to change product specifications, pricing and equipment at any time without incurring obligations. Your Ford Dealer is the best source of the most up-to-date information on Ford vehicles. Body manufacturers are responsible for compliance certification of the completed vehicle. The Ford New Vehicle Limited Warranty and any government certification made by Ford shall cover only the vehicle as manufactured by Ford and shall not extend to any addition, modification or change of or to the vehicle by the Ford Authorized Pool Account.

