



Innovation  
that excites

## 2015 QUEST®

### WELCOME TO THE 2015 NISSAN QUEST® DIGITAL BROCHURE

Full of images, feature stories, and all the specification and trim level information you need to help select your Quest.®

[Click here](#) to sign up for news and updates on the 2015 Nissan Quest.®





WHAT IF

## YOU STARTED EVERY DAY WITH THE PERFECT PARTNER?

Today will be different. You've got Quest® on your side. When life comes calling, rely on the modern 7-seater with style. Daily routine or family road trip, celebrate it all – with accommodations that are nothing but first-class. Say yes to a roof made of sky,<sup>1</sup> sliding doors that open with one touch,<sup>1</sup> and seats so incredibly easy to configure, you'll look for excuses to pack up and go.



Nissan Quest® Platinum shown in Gun Metallic with Dual Opening Glass Moonroof Package.

<sup>1</sup>Available feature.





Nissan Quest<sup>®</sup> Platinum shown in Beige Leather.





**The room you need.** The details you love. While you may like the Quest® for all the amazingly flexible space, you'll fall in love with the way it feels to simply sit behind the wheel. We designed it for that, with a beautifully curved dash, warm wood-tone trim, controls that are pleasing to the touch, and upscale details like piping on the available leather-appointed seats.







Nissan Quest<sup>®</sup> SL shown in Brilliant Silver with accessory Splash Guards.



**Permanent rear storage well.**

The cargo well behind the rear seats is always open for business, thanks to third-row seats that fold forward.<sup>1</sup>

**Easy up, easy down.** Push the release button and the third-row seats fold right down. The available power-up feature brings them back into place at the push of a button.

**A second row you never have to remove.** The second row folds flat, which means no more wrestling with seats.

**Power rear windows.** Fresh air for all. In Quest<sup>®</sup>, your second-row passengers have their own power window.

**Where to put the long legs?** With Quest<sup>®</sup>'s sliding second row, you can create more leg room where you need it, in the second or third row.<sup>2</sup>

**Quick Comfort<sup>®</sup> heated front seats.<sup>3</sup>** Get to cozy quicker. Heating immediately starts at your thighs and hips then spreads to include other areas of the body, for warming that's ASAP.

**Comfort seating design.** Shaped and padded especially for improved posture support and comfort. Designed with your next road trip in mind.

Want to see the flipping and folding in action? Click the button to see a short video. Or go to [bit.ly/questflex](http://bit.ly/questflex)



**Third-row seat down.** Now you have up to 75 cu. ft. of cargo room.<sup>4</sup> And thanks to the clever no-stow, forward-folding third row, you can still pack some gear in the permanent rear storage well.



**Second- and third-row seats down.** Just the pair of you cruising the flea market? What will you bring home? With up to 119.8 cu. ft. to fill, there's no telling.<sup>1,5</sup>

**FLIP, FOLD, AND FIT.  
ALL AT A MOMENT'S NOTICE.**





## CARGO MADE SMARTER.

In Quest,<sup>®</sup> not only does the second row fold flat, forward, and out of the way, so does the third. So unlike other minivans, instead of stowing seats, the cargo well behind the third row is a permanent place to put whatever you like.<sup>1</sup>



**All seats up.** Seven on board and you still have room for gear. The permanent rear storage well has two separate lids. You can keep a flat cargo floor on one side, and leave the other lid open to carry taller things.<sup>1</sup> Accessory Cargo Organizer shown.



**All seats down.** Go full cargo mode, while Quest's<sup>®</sup> practical and permanent rear storage well is always at the ready.<sup>1</sup>



Any way you look at it, Quest<sup>®</sup> flips and folds like no other minivan.

<sup>1</sup>Cargo shown for display purposes only. Cargo and load capacity limited by weight and distribution. Always secure all cargo. Heavy loading of the vehicle with cargo, especially on the roof, will affect the handling and stability of the vehicle. <sup>2</sup>119.8 cu. ft. on S, SV and SL models without Bose<sup>®</sup> audio system. 115.1 cu. ft. on SL and Platinum models with Bose<sup>®</sup> audio system.





Nissan Quest® Platinum shown in Beige Leather.



## LIFE MADE EASIER.

From a convenient way to get everyone inside, to a better way to wave goodbye, you'll see innovative design at work for you – everywhere you look.



**Nissan Intelligent Key® and Push Button Ignition.** A system so smart, you can unlock the doors, open the available power rear liftgate, and start the engine, all without taking the key out of your pocket or purse.



**Power rear liftgate** This available feature is the next best thing to your own doorman. Just push a button on the keyless remote, liftgate or dash.

**Power second-row windows** Open up to let fresh air in, or maybe just wave goodbye.

**Low step-in height** It's easy for anyone to get into Quest.®

**One-touch power sliding doors** Hands full? No problem. Quest's® available one-touch power sliding doors open easily.

**Driver's memory seat system** With two presets, the available driver's memory seat system lets you get comfy behind the wheel – regardless of whose turn it is to drive.

**Removable 2nd-row console.** Your choice. Cup holders for the rear and a place to stash small items. Or remove this handy console to create some walk-around space.





Technology to the rescue! Click the button to see a short video on how Quest® can save your next road trip. Or go to [bit.ly/questtech](http://bit.ly/questtech)



## TECHNOLOGY CHANGES EVERYTHING.

Hungry? Lost? Bored back there? With these available high tech and instant entertainment features, Quest® has you covered. Let the road trip begin.

**11" DVD monitor.** Our 11" 16:9 viewing area DVD monitor keeps everyone happy for hours and even has inputs for gaming.

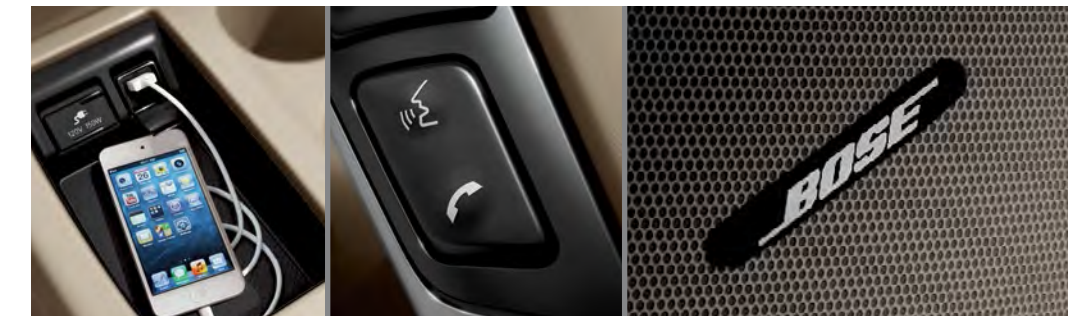
**Advanced Climate Control System.** First in its class.<sup>1</sup> Control your inside climate and clean the air quickly, when you need to. The system can filter the cabin air or help reduce outside intrusion, and even help reduce bothersome allergens.<sup>2</sup>

**Nissan Navigation System.** Quest®'s advanced navigation system gives you the tools to make every trip a snap. Find a new restaurant that's a perfect fit for the entire family, picky eaters included. Hear turn-by-turn Voice Guidance, then get around jams with available real-time traffic reports from NavTraffic®. Know the weather, the quickest way to the freeway, and make it there on time with these available features.<sup>3,4</sup>

**iPod® connectivity.** Your music comes along. On Quest® SV, SL and Platinum, a standard USB input is ideal for your iPod® so you can easily control your playlist. On S models, you can plug your player into a standard auxiliary audio input.<sup>5</sup>

**Bluetooth® Hands-free Phone System.** An easier way to stay in touch. Now you can make calls using the buttons on the steering wheel and listen via the speakers. You can also store your address books and use voice-activation to make calls by name.<sup>6</sup>

**Bose® audio system.** A 13-speaker Bose® audio system is made just for Quest®, designed around the cabin's unique acoustics to enhance its performance. From the driver's seat to the third row, every passenger enjoys the clarity and depth of a live show.



<sup>1</sup>Ward's Light Vehicle Market Segmentation. Small Van Class. Advanced Climate Control System introduced with MY11 Quest. <sup>2</sup>The Advanced Climate Control System with Plasmacluster® air purifier helps scrub the air in the vehicle's interior. The system senses exterior odors, suppresses unpleasant interior odors, stops the inflow of external odors and helps keep the cabin smelling fresh, but does not always eliminate odors. <sup>3</sup>Never program while driving. GPS mapping may not be detailed in all areas or reflect current road status. <sup>4</sup>Required SiriusXM® Satellite Radio, NavTraffic® and NavWeather® subscriptions sold separately and are continuous until you call SiriusXM® to cancel. Installation costs, one-time activation fee, other fees and taxes will apply. NavTraffic® available in select markets. Satellite Radio U.S. service and NavWeather® service available only to those 18 or older in the 48 contiguous states and D.C. Fees and programming subject to change. Subscriptions governed by Customer Agreement available at [siriusxm.com](http://siriusxm.com). ©2014 Sirius XM Radio Inc. Sirius®, XM® and all related marks and logos are trademarks of Sirius XM Radio Inc. <sup>5</sup>Driving is serious business and requires your full attention. If you have to use the connected device while driving, exercise extreme caution at all times so full attention may be given to vehicle operation. iPod® is a registered trademark of Apple, Inc. All rights reserved. iPod® not included. <sup>6</sup>Availability of specific features is dependent upon the phone's Bluetooth® support. Please refer to your phone Owner's Manual for details. Bluetooth® word mark and logos are owned by Bluetooth SIG, Inc., and any use of such marks by Nissan is under license. Bose® is a registered trademark of The Bose Corporation. Plasmacluster® is a registered trademark of Sharp Corporation.





Nissan Quest® SL shown in Gun Metallic with Dual Opening Glass Moonroof Package.

**A thousand things to do? Power through with confidence.** Starting with the on-ramp, where Quest®'s 260-horsepower V6 and super-smooth Continuously Variable Transmission (CVT) help make getting up to speed a piece of cake. Quest® is designed for easy maneuverability, too. Vehicle-speed-sensitive steering gives you the assist you need at different speeds. Steering is easier at low speeds (for parking), and firmer when you're cruising along the highway. And rest assured that Quest® is in it for the long haul. With regularly scheduled fluid and filter changes, you can roll past a lot of busy days and up to 105,000 miles before needing a tune-up.<sup>1</sup>

<sup>1</sup>Under normal driving conditions with routine fluid/filter changes. See Owner's Manual for details.





**NISSAN AROUND VIEW® MONITOR<sup>1,2</sup>**

**IT HAS YOUR BACK. AND THE REST OF YOU, TOO.**

What if parallel parking was easier? A rearview monitor is great when backing up – but when it comes to parking, it's nice to see more than just what's directly behind you. That's why Quest® offers an available class-exclusive Around View® Monitor.<sup>1,2,3</sup> Four cameras give you a virtual 360° bird's-eye view of your vehicle, with selectable split-screen close-ups of the front, rear, and curbside views, so you can get a better look.<sup>4</sup> And since all obstacles aren't stationary (shopping carts, we're talking to you), Moving Object Detection<sup>1</sup> keeps an eye around your Quest® and can warn you about moving objects detected in your vicinity.<sup>5</sup>

<sup>1</sup>Available feature. <sup>2</sup>Parking aid/convenience feature. Cannot completely eliminate blind spots. May not detect every object and does not warn of moving objects. Always check surroundings and turn to look behind you before moving vehicle. <sup>3</sup>Ward's Light Vehicle Market Segmentation. MY15 Quest® Platinum versus 2014 and in-market 2015 Small Van Class. Claim is current at time of printing. Feature only available on MY15 Quest® Platinum. <sup>4</sup>Virtual composite 360° view. <sup>5</sup>MOD cannot completely eliminate blind spots and may not detect every object. MOD operates at vehicle speeds below 5 mph. Always check surroundings and turn to look behind you before moving vehicle.

**RIGHT ON THE NOSE**

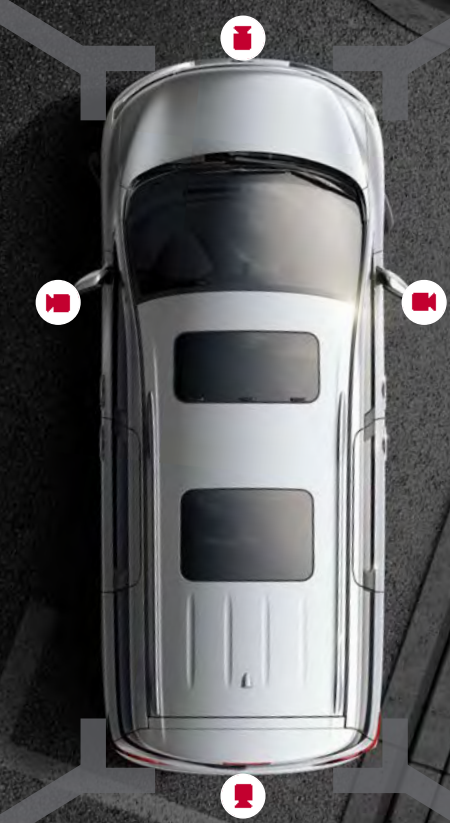
In Drive, the display gives you both a front and overhead view, so you know just how far to pull up – without going too far.

**COMPLETE THE PICTURE**

Located under your driver's side mirror, this camera helps round out your virtual 360° bird's-eye view, whether you're in Drive or Reverse.<sup>1</sup>

**SPARE YOUR WHEELS**

In Drive or Reverse, you can push the camera button to switch out the overhead for a side view. A great help for seeing how close you are to the curb.



**NO MORE BUMPER CARS**

In Reverse, the display helps you see what's directly behind you, while the overhead view helps with shorter objects otherwise hidden below your window.



## NISSAN SAFETY SHIELD® PHILOSOPHY

# INNOVATION THAT LOOKS OUT FOR YOU.

Wouldn't it be cool if you had the confidence you need for every part of your drive? The Nissan Safety Shield® is a comprehensive approach to safety that guides the engineering and development of every vehicle we make.

### MONITOR

Smart technologies are designed to help monitor conditions. Like a warning when another vehicle is detected in the blind spot area, or a system that helps ensure you're travelling on properly inflated tires.

#### Standard Tire Pressure Monitoring System with Easy-Fill Tire Alert<sup>1,2</sup>

Lets you know when a tire is low. And Easy-Fill Tire Alert takes the guesswork out of filling your tires, with a beep of the horn when you've reached the correct pressure.

**Available Around View® Monitor,<sup>3</sup> RearView Monitor,<sup>3</sup> Moving Object Detection,<sup>4</sup> and Smart Auto Headlights**

### RESPOND

Whether you need to hit the brakes hard or maneuver around an unexpected obstacle, these standard technologies help you respond to a potentially harmful situation.

**Vehicle Dynamic Control** helps you maintain your steered path.<sup>5</sup>

**Traction Control System** helps reduce wheelspin in low-traction situations.

**Anti-lock Braking System** helps you maintain steering control around obstacles while braking heavily.

**Electronic Brake force Distribution** sends extra force to the rear brakes when you have additional weight of passengers or cargo in the back.

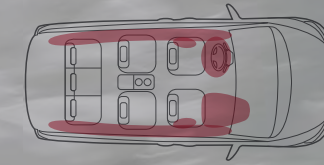
**Brake Assist** helps apply maximum braking force if it detects hard braking and senses you are in an emergency situation.<sup>6</sup>

### PROTECT

When a collision is unavoidable, Nissan's Zone Body construction helps absorb the impact while the advanced seat belt and air bag systems help protect passengers.

#### Six Standard Air Bags<sup>7</sup>

**LATCH System (Lower Anchors and Tethers for Children)**



**6 Standard Air Bags.<sup>7</sup>** Nissan Advanced Air Bag System features dual-stage supplemental front air bags with seat belt and occupant-classification sensors.<sup>7</sup> Quest<sup>®</sup> is also equipped with front seat-mounted side-impact supplemental air bags<sup>7</sup> and roof-mounted curtain side-impact supplemental air bags.<sup>7</sup>



#### Available Blind Spot Warning System<sup>8</sup>

Displays an indicator on your appropriate outside mirror when it detects a vehicle in the blind spot area. Activate the turn signal and the indicator will flash and a chime will sound.



**snug kids.** Nissan safety engineers have dedicated thousands of hours to evaluating hundreds of child restraints in Nissans. The result: an industry first, The Snug Kids<sup>®</sup> Child Safety Seat Fit Guide. This guide lists child seats that fit the rear seats of Nissan vehicles, as well as offers invaluable tips on correct installation. Look for the latest Fit Guide at [NissanUSA.com/SnugKids](http://NissanUSA.com/SnugKids).



Click the button to see a short video on how Snug Kids<sup>®</sup> helps you find the right CRS for your Nissan. Or go to [bit.ly/NissanSnugKids](http://bit.ly/NissanSnugKids)

<sup>1</sup>TPMS is not a substitute for regular tire pressure checks. <sup>2</sup>Vehicle must be on for the Easy-Fill Tire Alert to operate. <sup>3</sup>Parking aid/convenience feature. Cannot completely eliminate blind spots. May not detect every object and does not warn of moving objects. Always check surroundings and turn to look behind you before moving vehicle. <sup>4</sup>MOD cannot completely eliminate blind spots and may not detect every object. MOD operates at vehicle speeds below 9 mph. Always check surroundings and turn to look behind you before moving vehicle. <sup>5</sup>VDC, which should remain on when driving except when freeing the vehicle from mud or snow, cannot prevent accidents due to abrupt steering, carelessness, or dangerous driving techniques. <sup>6</sup>Brake Assist is only an aid to assist the driver and is not a collision warning or avoidance device. It is the driver's responsibility to be in control of the vehicle at all times. <sup>7</sup>Air bags are only a supplemental restraint system; always wear your seat belt. Even with the occupant-classification sensor, rear-facing child restraints should not be placed in the front-passenger's seat. All children 12 and under should ride in the rear seat properly secured in child restraints, booster seats, or seat belts according to their size. Air bags will only inflate in certain accidents; see your Owner's Manual for more details. Inflated air bags shown for illustration purposes only; actual coverage area may differ. Air bags deflate after deployment. <sup>8</sup>Blind Spot Warning is not a substitute for proper lane change procedures. The system will not prevent contact with other vehicles or accidents. It may not detect every vehicle or object around you.





## GENUINE NISSAN ACCESSORIES.

Every Genuine Nissan Accessory is custom-fit, custom-designed and durability-tested. Each one is backed by Nissan's 3-year/36,000-mile (whichever occurs first) limited warranty (if installed by dealer at the time of purchase),<sup>1</sup> and can be financed when installed by dealer at time of purchase.

- A. **Cargo Organizer<sup>2</sup>**  
Indulge your inner neat freak.
- B. **Illuminated Kick Plates (2-piece set)**  
Fewer scuffs and a grand entry, every time.
- C. **Interior Accent Lighting**  
Bring some color to the carpool.
- D. **All-season Floor Mats**  
The answer to muddy shoes and rogue sippy cups.
- E. **Rear Bumper Protector**  
Fight back against preventable scratches.
- F. **Child Seat Protector<sup>3</sup>**  
Look out for your children, and your seats.
- G. **Hatch Tent**  
It's Quest!<sup>®</sup> It's a campsite. It's both!
- H. **Cargo Area Protector<sup>2</sup>**  
Because being a cargo area isn't easy.

### Additional Accessories:

- Family Travel Clean-up Kit
- Splash Guards
- Hood Protector
- Roof Rail Crossbars<sup>2</sup>
- Carpeted Floor Mats
- Towing Accessories<sup>4</sup>
- Nissan VTRS (Vehicle Tracking and Recovery System)<sup>5</sup>
- And More

<sup>1</sup>Covered by Nissan's Limited Warranty on Genuine Nissan Replacement Parts, Genuine NISMO<sup>®</sup> S-Tune Parts, and Genuine Nissan Accessories for the longer of 12 months/12,000 miles (whichever occurs first) or the remaining period under the 3-year/36,000-mile (whichever occurs first) Nissan New Vehicle Limited Warranty. Terms and conditions apply. See Warranty Information Booklet for details. <sup>2</sup>Cargo and load capacity limited by weight and distribution. Always secure all cargo. Heavy loading of the vehicle with cargo, especially on the roof, will affect the handling and stability of the vehicle. <sup>3</sup>Always follow the child restraint manufacturer's instructions and review the child restraint manual before using this product. <sup>4</sup>See Nissan Towing Guide and Owner's Manual for proper use. <sup>5</sup>VTRS requires owner registration, a constant 12-volt source, and cellular and GPS satellite availability to function properly.

Click the button to see short videos of Genuine Nissan Accessories at work and at play. Or go to [bit.ly/quest\\_gnavideos](http://bit.ly/quest_gnavideos)



# MAKE EVERY DAY EVEN MORE SPECIAL.

For more information and to shop online for Quest<sup>®</sup> Genuine Nissan Accessories, go to [bit.ly/quest\\_estore](http://bit.ly/quest_estore)



**Nissan Quest<sup>®</sup> SL** shown in Brilliant Silver with Dual Opening Glass Moonroof Package with Hood Protector, Roof Rail Crossbars, Side-window Deflectors, Chrome Fog Light Trim, and Splash Guards.



## CHOOSE YOUR TRIM LEVEL

**S**

- 3.5-liter V6 engine with Xtronic CVT® (Continuously Variable Transmission)
- Anti-lock Braking System (ABS)
- Vehicle Dynamic Control (VDC) and Traction Control System (TCS)
- Tire Pressure Monitoring System (TPMS) with Easy-Fill Tire Alert
- Nissan Intelligent Key® with Push Button Ignition
- AM/FM/CD audio system with auxiliary audio input jack
- Cruise control with illuminated steering wheel-mounted switches
- Power second-row side windows
- 7-passenger seating capacity and permanent rear storage well (behind third row)
- Fold-flat second-row captain's chairs and fold-flat third-row bench seat
- Wood-tone trim on dashboard and front door panels
- Nissan Advanced Air Bag System and six standard air bags



**SL**

INCLUDES SV EQUIPMENT PLUS:

- 18" Aluminum-alloy wheels
- Roof rails
- Side sill spoilers with chrome accents
- One-touch power rear liftgate
- Smart Auto Headlights
- DVD Entertainment System with second-row 11" DVD monitor
- Leather-appointed seats and door trim
- Leather-wrapped shift knob
- Quick Comfort® heated front seats
- 8-way power driver's seat with power lumbar support
- Quick Release third-row folding seatbacks
- Auto-dimming interior rearview mirror with digital compass
- Power heated outside mirrors with turn signal indicators
- HomeLink® Universal Transceiver
- 120-volt AC power outlet

**KEY AVAILABLE PACKAGES:**

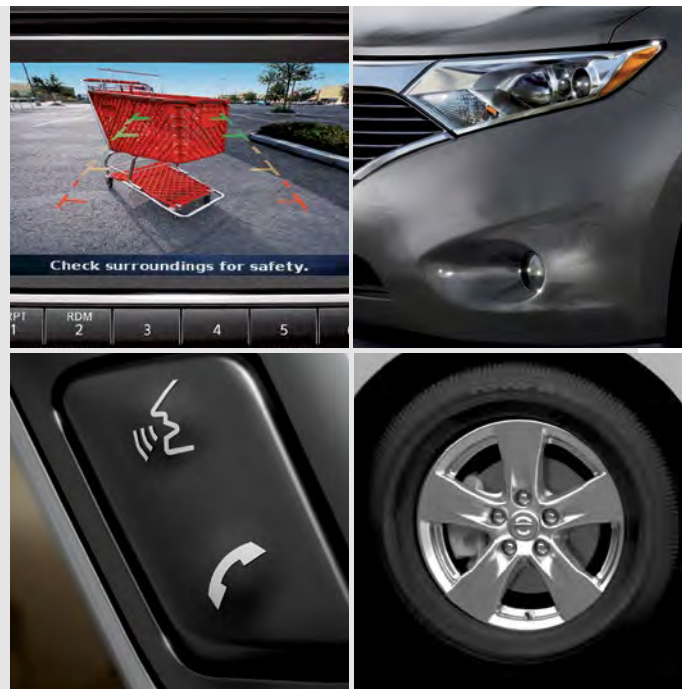
- DVD Entertainment System Package
- Bose® Audio System Package
- Dual Opening Glass Moonroof Package



**SV**

INCLUDES S EQUIPMENT PLUS:

- 16" Aluminum-alloy wheels
- Fog lights
- One-touch power sliding doors
- RearView Monitor
- Premium AM/FM/CD audio system with 5" color display and six speakers
- SiriusXM® Satellite Radio<sup>1</sup>
- Bluetooth® Hands-free Phone System<sup>2</sup>
- USB connection port for iPod® interface and other compatible devices
- Leather-wrapped steering wheel with illuminated audio controls
- Tri-zone Automatic Temperature Control (ATC)
- Rear privacy glass



**PLATINUM**

INCLUDES SL EQUIPMENT PLUS:

- Dual opening glass moonroof
- Around View® Monitor
- Moving Object Detection (MOD)
- Blind Spot Warning (BSW)
- Nissan Hard Drive Navigation System with 8" touch-screen monitor and Voice Recognition
- NavTraffic® and NavWeather® provided by SiriusXM<sup>1</sup>
- 13-speaker Bose® audio system
- Advanced Climate Control System with in-cabin polyphenol microfilter
- Streaming audio via Bluetooth® wireless technology<sup>2</sup>
- Automatic tilt-in-reverse outside mirrors
- Driver's memory seat system (two presets, remote-activated)
- 4-way power front-passenger's seat
- Power-return third-row seat
- Wood-tone trim on sliding door panels

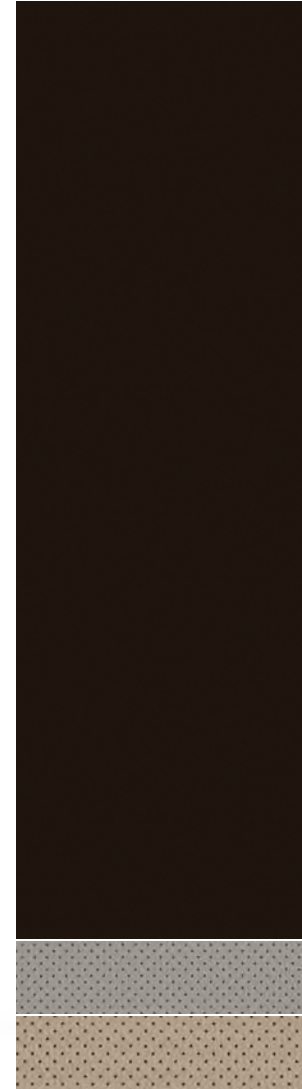


<sup>1</sup>Required SiriusXM® Satellite Radio, NavTraffic® and NavWeather® subscriptions sold separately and are continuous until you call SiriusXM to cancel. Installation costs, one-time activation fee, other fees and taxes will apply. NavTraffic® available in select markets. Satellite Radio U.S. service and NavWeather® service available only to those 18 or older in the 48 contiguous states and D.C. Fees and programming subject to change. Subscriptions governed by Customer Agreement available at [siriusxm.com](http://siriusxm.com). ©2014 Sirius XM Radio Inc. Sirius, XM and all related marks and logos are trademarks of Sirius XM Radio Inc. <sup>2</sup>Availability of specific features is dependent upon the phone's Bluetooth® support. Please refer to your phone Owner's Manual for details. Bluetooth® word mark and logos are owned by Bluetooth SIG, Inc., and any use of such marks by Nissan is under license. Bose® is a registered trademark of The Bose Corporation. HomeLink® is a registered trademark of Johnson Controls Technology Company. iPod® is a registered trademark of Apple, Inc. All rights reserved. iPod® not included.

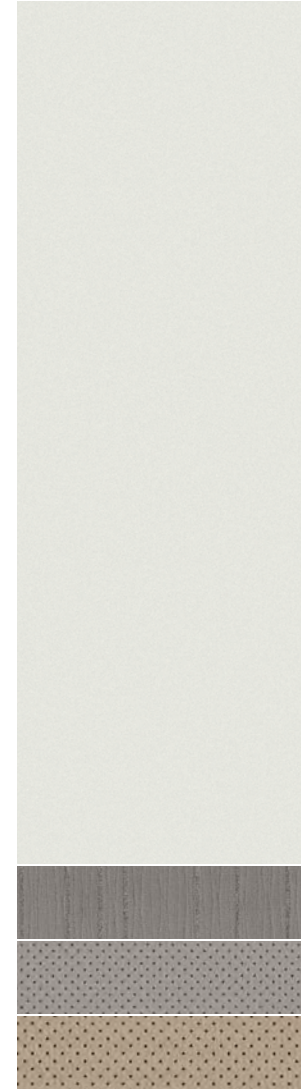


# CHOOSE YOUR COLOR

You've decided which Quest® you want, now here comes the best part: deciding what it's going to look like. Choose your favorite color and then pick from the available interiors based on the model of your choice.



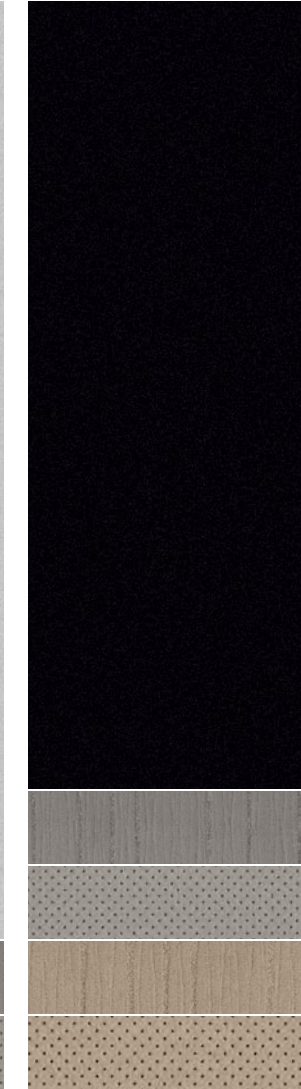
Dark Mahogany GAE



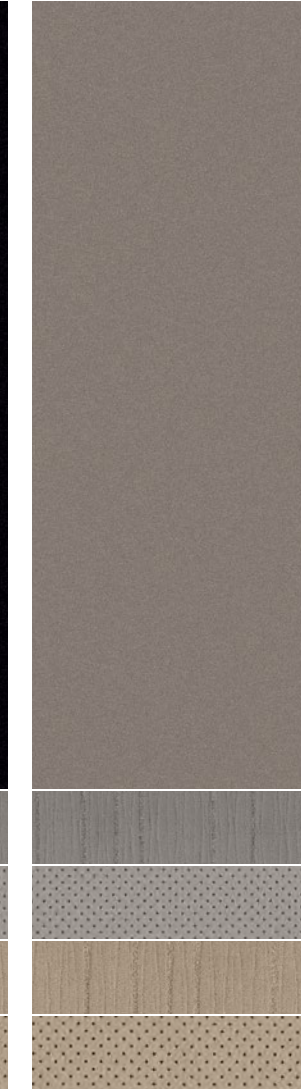
Pearl White QAB



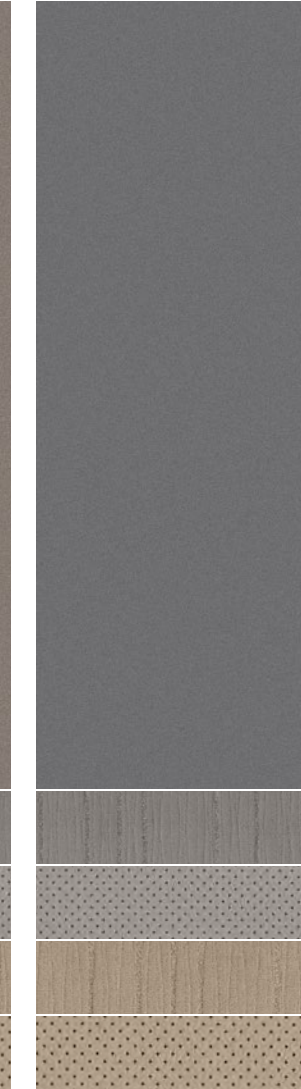
Brilliant Silver K23



Super Black KH3



Titanium KAC



Gun Metallic KAD

■ Standard  
 □ Part of Leather Package

Nissan has taken care to ensure that the color swatches presented here are the closest possible representations of actual vehicle colors. Swatches may vary slightly due to viewing light or screen quality. Please see the actual colors at your local Nissan dealer.

	S	SV	SL	PLATINUM
GRAY CLOTH	■			
GRAY LEATHER			■	■
BEIGE CLOTH				
BEIGE LEATHER			■	■

	S	SV	SL	PLATINUM
GRAY CLOTH	■			
GRAY LEATHER		□		■
BEIGE CLOTH				
BEIGE LEATHER			■	■

	S	SV	SL	PLATINUM
GRAY CLOTH	■			
GRAY LEATHER			■	■
BEIGE CLOTH				
BEIGE LEATHER			■	■

	S	SV	SL	PLATINUM
GRAY CLOTH	■			
GRAY LEATHER		□		■
BEIGE CLOTH				
BEIGE LEATHER			■	■

	S	SV	SL	PLATINUM
GRAY CLOTH	■			
GRAY LEATHER			■	■
BEIGE CLOTH				
BEIGE LEATHER			■	■

	S	SV	SL	PLATINUM
GRAY CLOTH	■			
GRAY LEATHER			■	■
BEIGE CLOTH				
BEIGE LEATHER			■	■



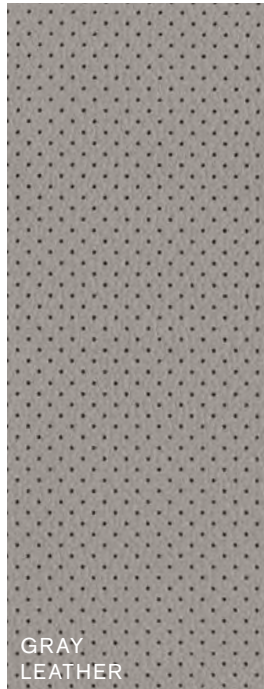
CHOOSE YOUR FABRIC



GRAY  
CLOTH



BEIGE  
CLOTH



GRAY  
LEATHER



BEIGE  
LEATHER





## SPECIFICATIONS

Engine	S	SV	SL	Platinum
VQ35DE – 3.5-liter DOHC 24-valve V6 engine <sup>1</sup>	■	■	■	■
Horsepower – 260 hp @ 6,000 rpm				
Torque – 240 lb-ft @ 4,400 rpm				
Continuously Variable Valve Timing Control System (CVTCS)	■	■	■	■
Nissan Direct Ignition System with double-tipped iridium				
spark plugs	■	■	■	■
Electronic drive-by-wire throttle	■	■	■	■

Drivetrain	S	SV	SL	Platinum
Front engine/Front-Wheel Drive	■	■	■	■
Xtronic CVT <sup>®</sup> (Continuously Variable Transmission)	■	■	■	■

Brakes	S	SV	SL	Platinum
4-wheel vented disc brakes	■	■	■	■
Anti-lock Braking System (ABS)	■	■	■	■
Electronic Brake force Distribution (EBD)	■	■	■	■
Brake Assist (BA)	■	■	■	■

Suspension/Steering	S	SV	SL	Platinum
Independent strut front suspension	■	■	■	■
Front stabilizer bar	■	■	■	■
Multi-link independent rear suspension	■	■	■	■
Vehicle-speed-sensitive electric power-assisted				
rack-and-pinion steering	■	■	■	■

Wheels/Tires	S	SV	SL	Platinum
16" x 6.5" steel wheels with bolt-on wheel covers	■			
16" x 7.0" aluminum-alloy wheels		■		
18" x 7.0" aluminum-alloy wheels			■	■
P225/65TR16 all-season tires	■	■		
P235/55TR18 all-season tires			■	■

Exterior Features	S	SV	SL	Platinum
Smart Auto Headlights			■	■
High Intensity Discharge (HID) xenon headlights				■

- Standard
- Part of Leather Package
- Part of DVD Entertainment System Package

- Part of Dual Opening Glass Moonroof Package
- Part of Bose<sup>®</sup> Audio System Package
- Accessory

Exterior Features (continued)	S	SV	SL	Platinum
Fog lights		■	■	■
Dual sliding rear doors	■	■	■	■
One-touch power sliding doors		■	■	■
One-touch power rear liftgate			■	■
Roof rails	■	■	■	■
Dual opening glass moonroof			■	■
Power outside mirrors	■	■		
Power outside mirrors with turn signal indicators			■	■
Heated outside mirrors			■	■
Automatic tilt-in-reverse outside mirrors			■	■
Front UV-reducing solar glass	■	■	■	■
Rear privacy glass		■	■	■
Chrome-accented grille and chrome license plate finisher		■	■	■
Side sill spoilers with chrome accents			■	■

Comfort/Convenience	S	SV	SL	Platinum
RearView Monitor		■	■	
Around View <sup>®</sup> Monitor				■
Nissan Intelligent Key <sup>®</sup> with Push Button Ignition	■	■	■	■
Remote front windows down and power sliding doors		■	■	■
Nissan Hard Drive Navigation System with 8" color				■
touch-screen monitor and Voice Recognition				■
NavTraffic <sup>®</sup> and NavWeather <sup>®</sup> provided by SiriusXM <sup>2</sup>				■
Bluetooth <sup>®</sup> Hands-free Phone System <sup>3</sup>		■	■	■
HomeLink <sup>®</sup> Universal Transceiver			■	■
Auto-dimming interior rearview mirror			■	■
Digital compass			■	■
Air conditioning	■	■	■	■
Tri-zone Automatic Temperature Control (ATC)		■	■	
Advanced Climate Control System				■
In-cabin charcoal microfilter	■	■	■	
In-cabin polyphenol microfilter				■
Second- and third-row air conditioning/heater vents with				
second-row controls	■	■	■	■
Power door locks with auto-locking feature	■	■	■	■
Power front windows with driver's one-touch auto-up/down	■	■	■	■
Power front-passenger window with one-touch auto-up/down		■	■	■
Power second-row side windows	■	■	■	■
Second- and third-row manual side sunshades				■

Comfort/Convenience (continued)	S	SV	SL	Platinum
Tilt and telescoping steering column	■	■	■	■
Cruise control with illuminated steering wheel-mounted switches	■	■	■	■
Variable intermittent speed-sensitive flat-blade windshield				
wipers and intermittent rear wiper	■	■	■	■
Dual front map lights, dual second- and dual third-row				
reading, and cargo area light	■	■	■	■
Sun visors with illuminated vanity mirrors and extensions	■	■	■	■
Sunglasses storage	■	■	■	■
Mood lighting	■	■	■	■
First- and second-row height-adjustable seat belts	■	■	■	■
Two 12-volt DC power outlets	■			■
120-volt AC power outlet		■	■	■
Retained accessory power and battery saver	■	■	■	■
First-row center console with cup holders	■	■	■	■
Removable second-row center console with cup holders	■	■	■	■
First- and third-row seatback grocery bag hooks	■	■	■	■
Driver seatback pocket		■	■	■
Front-passenger seatback pocket		■	■	■
Permanent rear storage well	■			■

Seating/Appointments	S	SV	SL	Platinum
6-way manual driver's seat with center armrest	■	■		
8-way power driver's seat with center armrest		■	■	■
4-way power front-passenger's seat				■
Driver's seat power lumbar support		■	■	■
Driver's memory seat system (two presets, remote-activated)				■
Quick Comfort <sup>®</sup> heated front seats		■	■	■
Second-row captain's chairs (sliding and reclining) with				
third-row easy-entry feature	■	■	■	■
Fold-flat second-row captain's chairs	■	■	■	■
Third-row 60/40 split fold-flat bench seat	■	■	■	■
Quick Release third-row folding seatbacks			■	■
Power-return third-row seat				■
Cloth seat trim	■	■		
Leather-appointed seats and door trim		■	■	■
Leather-wrapped steering wheel		■	■	■
Leather-wrapped shift knob		■	■	■
Wood-tone trim on dashboard and front door panels	■	■	■	■
Wood-tone trim on sliding door panels				■

<sup>1</sup>Use regular unleaded fuel with 87 octane. For maximum power, use premium fuel. <sup>2</sup>Required SiriusXM<sup>®</sup> Satellite Radio, NavTraffic<sup>®</sup> and NavWeather<sup>®</sup> subscriptions sold separately and are continuous until you call SiriusXM to cancel. Installation costs, one-time activation fee, other fees and taxes will apply. NavTraffic<sup>®</sup> available in select markets. Satellite Radio U.S. service and NavWeather<sup>®</sup> service available only to those 18 or older in the 48 contiguous states and D.C. Fees and programming subject to change. Subscriptions governed by Customer Agreement available at [siriusxm.com](http://siriusxm.com). ©2014 Sirius XM Radio Inc. Sirius, XM<sup>®</sup> and all related marks and logos are trademarks of Sirius XM Radio Inc. <sup>3</sup>Availability of specific features is dependent upon the phone's Bluetooth<sup>®</sup> support. Please refer to your phone Owner's Manual for details. Bluetooth<sup>®</sup> word mark and logos are owned by Bluetooth SIG, Inc., and any use of such marks by Nissan is under license. Bose<sup>®</sup> is a registered trademark of The Bose Corporation. HomeLink<sup>®</sup> is a registered trademark of Johnson Controls Technology Company.



## SPECIFICATIONS (CONTINUED)

Audio/Entertainment	S	SV	SL	Platinum
AM/FM/CD audio system	■			
Premium AM/FM/CD audio system with 5" color display		■	■	
Bose® audio system and AM/FM/CD			B	■
SiriusXM® Satellite Radio <sup>1</sup>		■	■	■
Streaming audio via Bluetooth® wireless technology <sup>2</sup>		■	■	■
DVD Entertainment System with 7" color in-dash monitor (8" on Platinum)		D	D	■
Second-row 11" WVGA DVD monitor with auto-dimming function		D	D	■
Dual Media Playback capability		D	D	■
Two wireless headsets and remote control		D	D	■
USB connection port for iPod® interface and other compatible devices		■	■	■
Auxiliary audio input jack	■	■	■	■
Auxiliary audio/video input jacks		D	D	■
MP3/WMA CD playback capability	■	■	■	■
Radio Data System (RDS)		■	■	■
Speed-sensitive volume control		■	■	■
Illuminated steering wheel-mounted audio controls		■	■	■
Four speakers	■			
Six speakers		■	■	
13 speakers			B	■

Safety/Security	S	SV	SL	Platinum
Nissan Advanced Air Bag System with dual-stage supplemental front air bags, seat belt sensors and occupant-classification sensor	■	■	■	■
Driver and front-passenger seat-mounted side-impact supplemental air bags	■	■	■	■
Roof-mounted curtain side-impact supplemental air bags for outboard occupant head protection for all three rows	■	■	■	■
Vehicle Dynamic Control (VDC) with Traction Control System (TCS)	■	■	■	■
Blind Spot Warning (BSW)				■
Moving Object Detection (MOD)				■
3-point ALR/ELR passenger seat belt system (ELR for driver)	■	■	■	■
Front seat belts with pre-tensioners and load limiters	■	■	■	■
Front-seat Active Head Restraints	■	■	■	■

Safety/Security (continued)	S	SV	SL	Platinum
Height-adjustable head restraints for all positions	■	■	■	■
LATCH System (Lower Anchors and Tethers for CHildren)	■	■	■	■
Child-safety sliding rear door locks	■	■	■	■
Zone Body construction with front and rear crumple zones and hood-buckling creases	■	■	■	■
Energy-absorbing steering column	■	■	■	■
High-strength steel side-door guard beams	■	■	■	■
Tire Pressure Monitoring System (TPMS) with Easy-Fill Tire Alert	■	■	■	■
Nissan Vehicle Immobilizer System	■	■	■	■
Vehicle Security System	■	■	■	■

## PACKAGES

### L Leather Package (SV)

Leather-appointed seats and door trim  
 Quick Comfort® heated front seats  
 8-way power driver's seat with center armrest  
 Driver's seat power lumbar support  
 Front-passenger seatback pocket  
 Leather-wrapped shift knob

### D DVD Entertainment System Package (SV, SL)

DVD Entertainment System with 7" color in-dash monitor  
 Second-row 11" WVGA DVD monitor with auto-dimming function  
 Auxiliary audio/video input jacks  
 Dual Media Playback capability  
 Two wireless headsets and remote control  
 120-volt AC power outlet

This package replaces the standard auxiliary audio input jack.

### M Dual Opening Glass Moonroof Package (SL)

Dual opening glass moonroof

This package requires the DVD Entertainment System Package.

### B Bose® Audio System Package (SL)

Bose® audio system and AM/FM/CD and 13 speakers

This package requires the Dual Opening Glass Moonroof Package.



## DIMENSIONS/CAPACITIES/WEIGHTS/MPG

### Dimensions – Inches

#### Exterior

Wheelbase	118.1
Overall length	200.8
Overall width	77.6
Overall height	71.5/73.0 with roof rails
Track width (front/rear)	
16" Wheels	68.1/68.1
18" Wheels	67.7/67.7
Step-in height	
16" Wheels	15.7
18" Wheels	16.1

#### Interior (front/rear)

Head room	42.1/41.6/40.0 without moonroof
	40.9/39.9/38.0 with moonroof
Leg room	43.8/36.7/40.5
Hip room	57.3/66.0/49.6
Shoulder room	64.5/63.2/61.2

### Capacities

Seating capacity	7
Interior passenger volume (cu. ft.)	177.8 without moonroof, 170.9 with moonroof
Interior volume index (cu. ft.)	214.8 (S, SV, SL) without moonroof
	210.2 (Platinum) without moonroof
	206.2 (SL) with moonroof
	201.6 (Platinum) with moonroof
Cargo volume (cu. ft.)	
Permanent rear storage well (S, SV, SL)	11.4
Permanent rear storage well with	
Bose® audio system (SL, Platinum)	6.7
All seats in user positions	25.7
Second row upright, third row folded flat	63.6
Second row folded, third row folded flat	108.4
Fuel tank (gals.)	20.0

### Curb Weights – Lbs.

	S	SV	SL	Platinum
Base total	4,349	4,387	4,489	4,553

### 2015 EPA Fuel Economy Estimates

	S	SV	SL	Platinum
City/Highway/Combined MPG	20/27/22	20/27/22	20/27/22	20/27/22

Actual mileage may vary with driving conditions – use for comparison only.

## BUYING/OWNING



**Nissan Motor Acceptance Corporation.** Whether you're buying or leasing, you'll find attractive rates and flexible terms to make your purchase more accessible.

**College Grad Program.** Ask about our special new vehicle pricing available to individuals up to two years after graduation.

**Active and Reserve US Military Program.** Ask about eligibility for our fixed discount on new vehicle pricing available to those serving our country.

**New Vehicle Limited Warranties.** Protection for your new Nissan includes 3-year/36,000-mile (whichever occurs first) basic coverage and 5-year/60,000-mile (whichever occurs first) powertrain coverage. Terms, conditions and exclusions apply. See Warranty Information Booklet for complete details.

**Security+Plus®** For additional peace of mind, a variety of extended service plans lets you tailor the coverage to your driving habits.

**Maintenance+Plus®** This extended plan ensures your Nissan will receive up to 17 different services and over 33 different inspection items at each visit, using the most up-to-date diagnostic equipment available.

**Genuine Nissan Parts.** When it comes time for service, any necessary replacement parts will be made using Genuine Nissan new or remanufactured parts, or Nissan-approved parts. And they're the only parts to carry Nissan's factory-backed limited warranty.

**Nissan Mobility Assist.** This program offers reimbursements toward the purchase and installation of certain mobility assistance products for program-eligible Nissans. Go to [NissanUSA.com/mobility](http://NissanUSA.com/mobility) for more info.

Nissan's environmental action plan focuses on several key areas. Increasing production of Zero Emission vehicles, including the 100% electric LEAF.® Improving fuel efficiency through our PUREDRIVE™ measures. And reducing the environmental impact of manufacturing, as seen at our new, energy-efficient, low-emissions paint plant in Tennessee. For more information, log on to [NissanUSA.com/green](http://NissanUSA.com/green)



Follow us: @NissanSupport

At [NissanUSA.com](http://NissanUSA.com), you'll find virtual product demonstrations, a way to "build your own Nissan," a dealer locator, and more information about key Nissan support services. Or if you'd prefer, call **1-800-NISSAN-3** for answers to specific questions about Quest® or any other Nissan vehicle. The Nissan names, logos, product names, feature names, and slogans are trademarks owned by or licensed to Nissan Motor Co. Ltd. and/or its North American subsidiaries. **Always wear your seat belt, and please don't drink and drive.** ©2014 Nissan North America, Inc.

This brochure is intended for general descriptive and informational purposes only. It is subject to change and does not constitute an offer, representation or warranty (express or implied) by Nissan North America, Inc. Interested parties should confirm the accuracy of any information in this brochure as it relates to a vehicle directly with Nissan North America, Inc., before relying on it to make a purchase decision. Nissan North America, Inc., reserves the right to make changes, at any time, without prior notice, in prices, colors, materials, equipment, specifications, and models and to discontinue models or equipment. Due to continuous product development and other pre- and post-production factors, actual vehicle, materials and specifications may vary from this brochure. Some vehicles shown with optional equipment. See the actual vehicle for complete accuracy. Availability and delivery times for particular models or equipment may vary. Specifications, options and accessories may differ in Hawaii, U.S. territories and other countries. For additional information on availability, options or accessories, see your Nissan dealer or contact Nissan North America, Inc.

Sign up for the latest news and updates on the 2015 Nissan Quest.®

or visit [NissanUSA.com/quest](http://NissanUSA.com/quest)

Los folletos de Nissan también están disponibles en español.

Para descargar el PDF, visita:

[NissanUSA.com/folletos-espanol](http://NissanUSA.com/folletos-espanol)

And follow Nissan on:

