

NISSAN INTELLIGENT MOBILITY™

Nissan Intelligent Mobility guides everything we do. We're using new technologies to transform cars from mere driving machines into assistants. Together the journey is more confident, connected, and exciting. Whether it's cars that assist in the driving task, or highways that charge your EV as you go along, it's all in the very near future. And it's a future already taking shape in the Nissan you drive today.

SEE ALTIMA® COME TO LIFE

Go to NissanUSA.com and find an interactive brochure for Altima® and every Nissan in the lineup. Available on desktop or smartphone, it's the full product story - including demos, videos, and complete info on trims, colors, and accessories.

Or download the Interactive Brochure Hub app on your tablet.
Free on the App Store® and Google Play.™



**Innovation
that excites**

**2018
ALTIMA®**



NISSAN ROADSIDE ASSISTANCE

Your peace of mind is on us. For 36 months or 36,000 miles, whichever comes first, your new Nissan is covered for the following:¹


- Flat-tire changes
- Trip Interruption benefits
- Jump starts
- Vehicle lockouts
- Emergency fuel delivery

Follow Nissan on:



visit NissanUSA.com/altima

¹Available services/features may be shown. Compatible connected device may be required. Only use services/features and device when safe and legal to do so. Subject to GPS and wireless network availability and connection, and system/technology limitations. Text rates/data usage/subscription may apply. Some services/features provided by companies not within Nissan or its partners' or agents' control and may be discontinued at any time. For more information, see dealer, Owner's Manual, or NissanUSA.com/connect/important-information. The App Store® logo is a registered trademark of Apple, Inc. All rights reserved. Facebook® is a registered trademark of Facebook, Inc. Google Play™ is a trademark of Google, Inc. Twitter® is a registered trademark of Twitter, Inc. YouTube® is a registered trademark of Google Inc.



TAKE ON THE STATUS QUO. Accelerate your pulse with a look that's aggressive and strong. Own the road with dynamic performance at your command. Inside, you'll find everything you could ever want, along with a true sense of connection to what's possible. The 2018 Nissan Altima® **TAKE ON TODAY.**

See Altima® in action at:
bit.ly/18altimavideo

Nissan Altima® 2.5 SR shown in Scarlet Ember.



Nissan Altima® 3.5 SL shown in Beige Leather.

38
MPG HIGHWAY¹

POWERFUL YET EFFICIENT

A roomy sedan that gets up to 38 MPG highway is smart! Combining a punchy 4-cylinder engine, or available powerful V6 engine, and a responsive Xtronic CVT® (Continuously Variable Transmission) – that’s brilliant.

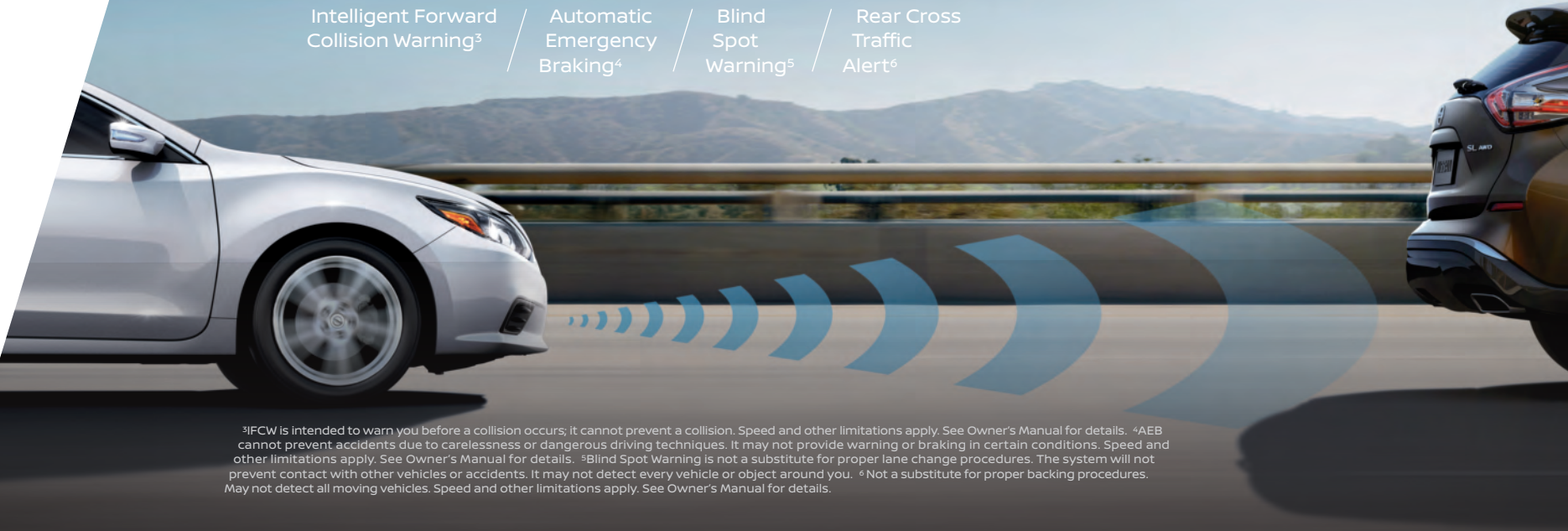
Xtronic CVT / 179-hp, 4-cylinder engine / Wind-cheating aerodynamics

¹2018 EPA Fuel Economy Estimates 27 city / 38 highway / 31 combined for Altima® 2.5 S, 2.5 SV, 2.5 SL. Actual mileage may vary with driving conditions – use for comparison only.

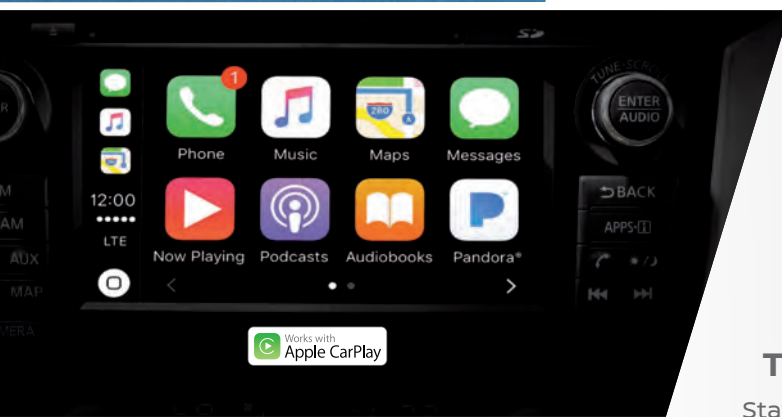
ADVANCED DRIVER TECHNOLOGIES

Whether you’re changing lanes on the highway or deftly maneuvering your way out of a parking spot, Altima’s available Nissan Intelligent Mobility features use an array of radar-based sensors to act as a second set of eyes, giving you a whole new way to double-check.

Intelligent Forward Collision Warning³ / Automatic Emergency Braking⁴ / Blind Spot Warning⁵ / Rear Cross Traffic Alert⁶



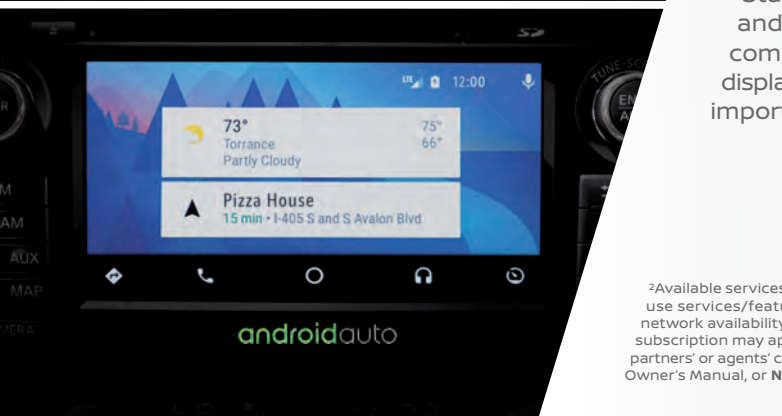
³FCW is intended to warn you before a collision occurs; it cannot prevent a collision. Speed and other limitations apply. See Owner’s Manual for details. ⁴AEB cannot prevent accidents due to carelessness or dangerous driving techniques. It may not provide warning or braking in certain conditions. Speed and other limitations apply. See Owner’s Manual for details. ⁵Blind Spot Warning is not a substitute for proper lane change procedures. The system will not prevent contact with other vehicles or accidents. It may not detect every vehicle or object around you. ⁶Not a substitute for proper backing procedures. May not detect all moving vehicles. Speed and other limitations apply. See Owner’s Manual for details.



THE WORLD AT YOUR FINGERTIPS

Staying connected has never been easier. Apple CarPlay™ and Android Auto™ take the things you want to do with your compatible smartphone and put them right on the 7.0" color display. Combined with the NissanConnect® system, everything important to you is right within reach.²

²Available services/features may be shown. Compatible connected device may be required. Only use services/features and device when safe and legal to do so. Subject to GPS and wireless network availability and connection, and system/technology limitations. Text rates/data usage/subscription may apply. Some services/features provided by companies not within Nissan or its partners' or agents' control and may be discontinued at any time. For more information, see dealer, Owner's Manual, or NissanUSA.com/connect/important-information.



MEET THE ALTIMA® SR SPECIAL EDITION

From its sport-tuned suspension to its steering wheel-mounted paddle shifters, it’s clear: The Altima SR Special Edition is about much more than turning heads. It’s about delivering a thrilling driving experience. Of course, with unique gunmetal-finished, 18" alloy wheels, rear sport spoiler, and distinctive Prima-Tex™-appointed seats, its eye-catching looks are still impossible to ignore.

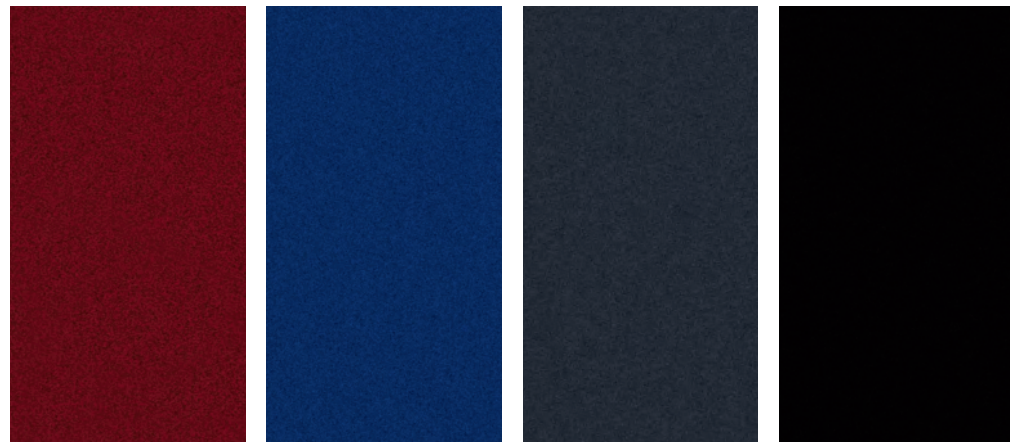


CHOOSE YOUR COLOR



Glacier White QAK Pearl White¹ QAB Brilliant Silver K23 Gun Metallic KAD

	2.5 S	2.5 SV	2.5 SR	2.5 SL	3.5 SL
BEIGE CLOTH					
CHARCOAL CLOTH	■				
CHARCOAL SPORT CLOTH					
CHARCOAL SPORT PRIMA-TEX™					
BEIGE LEATHER					
CHARCOAL LEATHER					



Scarlet Ember¹ NBL Deep Blue Pearl RAY Storm Blue RBD Super Black KH3

	2.5 S	2.5 SV	2.5 SR	2.5 SL	3.5 SL
BEIGE CLOTH					
CHARCOAL CLOTH	■	■			
CHARCOAL SPORT CLOTH					
CHARCOAL SPORT PRIMA-TEX™					
BEIGE LEATHER					
CHARCOAL LEATHER					

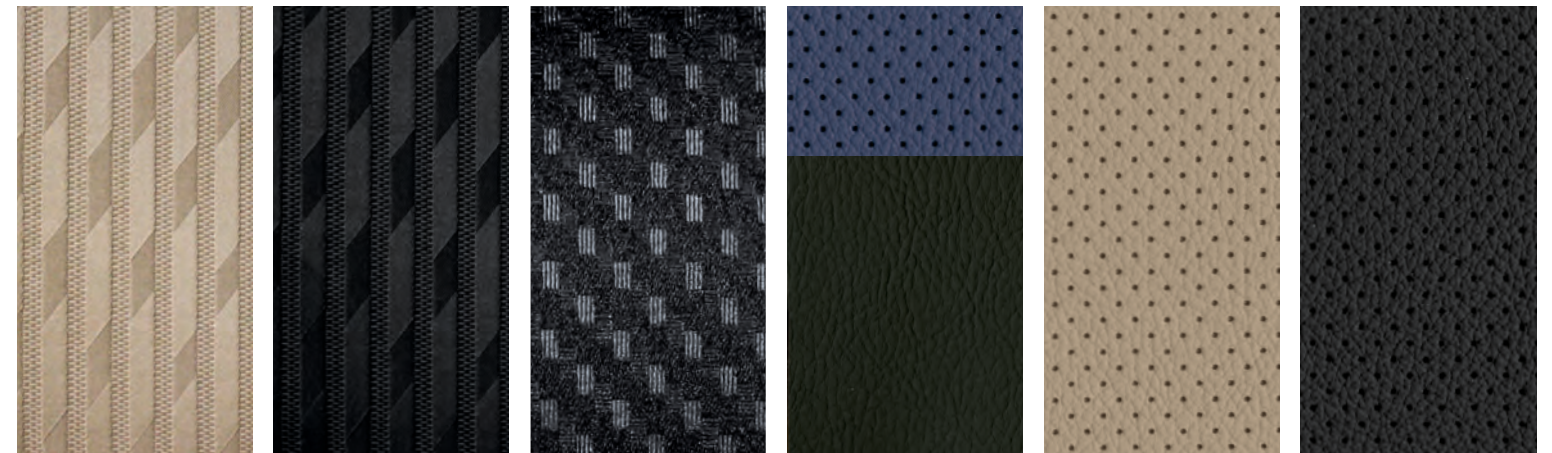
■ Standard
¹Extra cost option.

Nissan has taken care to ensure that the color swatches presented here are the closest possible representations of actual vehicle colors. Swatches may vary slightly due to the printing process and whether viewed in daylight, fluorescent or incandescent light. Please see the actual colors at your local Nissan dealer.

CHOOSE YOUR INTERIOR



Nissan Altima® 3.5 SL shown in Charcoal Leather.



Beige Cloth 2.5 SV Charcoal Cloth 2.5 S | 2.5 SV Charcoal Sport Cloth 2.5 SR Charcoal Sport Prima-Tex™ SR SPECIAL EDITION Beige Leather 2.5 SL | 3.5 SL Charcoal Leather 2.5 SL | 3.5 SL

CHOOSE YOUR TRIM LEVEL AND PACKAGE

4-CYLINDER ENGINE

2.5 S

2.5-liter 4-cylinder engine, USB port,¹ Siri® Eyes Free,² Hands-free Text Messaging Assistant,³ RearView Monitor,⁴ AM/FM/CD audio system with 5.0" color monitor, cruise control with steering wheel-mounted controls, air conditioning with in-cabin microfilter, sun visors with illuminated vanity mirrors and extensions, Nissan Intelligent Key® with Push Button Ignition, Intelligent Forward Collision Warning,⁵ Automatic Emergency Braking,⁶ Tire Pressure Monitoring System (TPMS) with individual tire pressure display and Easy-Fill Tire Alert,^{7,8} Intelligent Auto Headlights



2.5 SR

INCLUDES 2.5 S EQUIPMENT PLUS:

18" Machine-finished wheels, sport-tuned suspension, sport spoiler, smoked headlight housing, smoked taillight housing, fog lights, paddle shifters and manual shift mode, leather-wrapped steering wheel, leather-wrapped shift knob, unique sport interior accents, 8-way power driver's seat, 2-way driver's power lumbar support



SR SPECIAL EDITION

INCLUDES 2.5 SR EQUIPMENT PLUS:

Remote Engine Start System,⁹ SiriusXM® Satellite Radio with 3-month complimentary trial access,² Sport Prima-Tex™-appointed seats, heated front seats, 18" gunmetal aluminum-alloy wheels, NissanConnect® features: Nissan Navigation System,¹⁰ Apple CarPlay,^{™2} Android Auto,^{™2} 7.0" multi-touch control color monitor, SiriusXM® Traffic and Travel Link,² Nissan Voice Recognition for audio and navigation¹⁰



2.5 SV

INCLUDES 2.5 S EQUIPMENT PLUS:

17" Aluminum-alloy wheels, Dual Zone Automatic Temperature Control, Remote Engine Start System with Intelligent Climate Control,⁹ Rear Cross Traffic Alert,¹¹ Blind Spot Warning,¹² SiriusXM® Satellite Radio,² leather-wrapped steering wheel, fog lights, 8-way power driver's seat, 2-way driver's power lumbar support



2.5 SL

INCLUDES 2.5 SV EQUIPMENT PLUS:

Bose® Premium Audio System with 9 speakers, heated front seats, 4-way power front passenger's seat, leather-appointed seats, leather-wrapped shift knob, premium interior trim, rear passenger air conditioning vents, HomeLink® Universal Transceiver, auto-dimming inside rearview mirror with digital compass, passenger-side front-window one-touch auto-up/down with auto-reverse, manual folding outside mirrors with LED turn indicators, heated steering wheel, heated outside mirrors



V6 ENGINE

3.5 SL

INCLUDES 2.5 SL EQUIPMENT PLUS:

3.5-L V6 engine with 270 horsepower and 251 lb-ft of torque, 18" aluminum-alloy wheels, LED headlights with signature, smoked headlight housing, Intelligent Cruise Control,¹³ Front and Rear Sonar System,¹⁴ power sliding moonroof with tilt feature, NissanConnect features: Nissan Navigation System,¹⁰ Apple CarPlay,^{™2} Android Auto,^{™2} 7.0" multi-touch control color monitor, SiriusXM® Traffic and Travel Link,² NissanConnect® Services powered by SiriusXM,^{9,2} Nissan Voice Recognition for navigation and audio¹⁰



2.5 S

CONVENIENCE PACKAGE

6-way power driver's seat, Remote Engine Start System⁹

2.5 SV

TECHNOLOGY PACKAGE

Heated front seats, Heated outside mirrors, Heated steering wheel, Rear passenger air conditioning vents, Power sliding glass moonroof with one-touch open/close and tilt feature, Manual folding outside mirrors with LED turn signal indicators, Passenger-side front-window one-touch auto-up/down with auto-reverse, Auto-dimming inside rearview mirror, HomeLink® Universal Transceiver, Digital compass, Mood lighting, NissanConnect features: Nissan Navigation System,¹⁰ Apple CarPlay,^{™2} Android Auto,^{™2} 7.0" multi-touch control color monitor, SiriusXM® Traffic and Travel Link,² Nissan Voice Recognition for audio and navigation¹⁰

2.5 SL

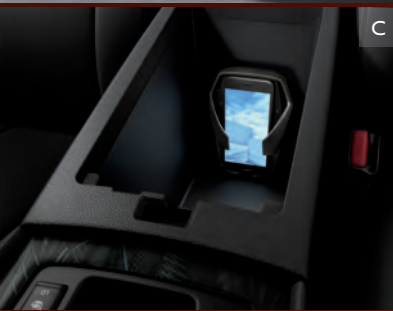
TECHNOLOGY PACKAGE

LED headlights with signature, Smoked headlight housing, Power sliding glass moonroof with one-touch open/close and tilt feature, NissanConnect features: Nissan Navigation System,¹⁰ Apple CarPlay,^{™2} Android Auto,^{™2} NissanConnect Services powered by SiriusXM,^{9,2} 7.0" multi-touch control color monitor, SiriusXM® Traffic and Travel Link,² Nissan Voice Recognition for audio and navigation¹⁰

Images may show additional available equipment. ¹Driving is serious business and requires your full attention. If you have to use the connected device while driving, exercise extreme caution at all times so full attention may be given to vehicle operation. External device not included. ²Available services/features may be shown. Compatible connected device may be required. Only use services/features and device when safe and legal to do so. Subject to GPS and wireless network availability and connection, and system/technology limitations. Text rates/data usage/subscription may apply. Some services/features provided by companies not within Nissan or its partners' or agents' control and may be discontinued at any time. For more information, see dealer, Owner's Manual, or NissanUSA.com/connect/important-information. ³Use the Text Messaging feature after stopping your vehicle in a safe location. If you have to use the feature while driving, exercise extreme caution at all times so full attention may be given to vehicle operation. Compatible smartphone required. Text rates and/or data usage may apply. ⁴Parking aid/convenience feature. Cannot completely eliminate blind spots. May not detect every object and does not warn of moving objects. Always check surroundings and turn to look behind you before moving vehicle. ⁵IFCW is intended to warn you before a collision occurs; it cannot prevent a collision. Speed and other limitations apply. See Owner's Manual for details. ⁶AEB cannot prevent accidents due to carelessness or dangerous driving techniques. It

may not provide warning or braking in certain conditions. Speed and other limitations apply. See Owner's Manual for details. ⁷TPMS is not a substitute for regular tire pressure checks. ⁸Vehicle must be on for the Easy-Fill Tire Alert to operate. ⁹State and local laws, regulations or ordinances may apply based on the location of the vehicle. ¹⁰Never program while driving. GPS mapping may not be detailed in all areas or reflect current road status. ¹¹Not a substitute for proper backing procedures. May not detect all moving vehicles. Speed and other limitations apply. See Owner's Manual for details. ¹²Blind Spot Warning is not a substitute for proper lane change procedures. The system will not prevent contact with other vehicles or accidents. It may not detect every vehicle or object around you. ¹³Intelligent Cruise Control is not a collision avoidance system or warning device. Designed to use limited braking. Failure to apply the brakes could result in an accident. ¹⁴The Sonar System is a convenience, not a substitute for proper parking and/or backing procedures. Always check that it is safe to do so before moving vehicle. May not detect every object. Android Auto™ is a trademark of Google, Inc. Apple CarPlay™ is a trademark of Apple, Inc. Bose® is a registered trademark of The Bose Corporation. HomeLink® is a registered trademark of Gentex Corporation. Siri® and Siri® Eyes Free are registered trademarks of Apple, Inc. The Sirius®, XM®, and SiriusXM® names and all related marks and logos are trademarks of Sirius XM Radio Inc. All other trademarks are the property of their respective owners.

CHOOSE YOUR ACCESSORIES



Every Genuine Nissan Accessory is custom-fit, custom-designed and durability-tested. Each one is also backed by Nissan's 3-year/36,000-mile (whichever occurs first) limited warranty (if installed by dealer at the time of purchase).¹ Ask your dealer whether a specific Genuine Nissan Accessory may be financed when installed by the dealer at the time of purchase.

A. Chrome Rear Bumper Protector
Proof that the best defense is great style.

B. Nissan WiFi & Apps²
Get on the road and online.

C. Wireless Smartphone Charger
Power up without the pesky cords.

D. All-season Floor Mats
Skip the mud – and other messes.

E. Illuminated Kick Plates
Fewer scuffs and a grand entry, every time.

F. Remote Engine Start System³
Get a head start on your next road trip.

G. Cargo Organizer⁴
Bring some order to your cargo area.

H. Interior Accent Lighting
Add a warm glow to the mood.

Additional Accessories:

- Dual Rear USB Charging Ports^{5, 6}
- Body Side Moldings
- Carpeted Floor Mats
- Carpeted Trunk Mat
- Sport Carpeted Floor Mats
- Trunk Protector⁴
- Hideaway Trunk Net Kit
- Trunk Sub-floor Organizer
- Clear Rear Bumper Protector
- And More

GENUINE NISSAN ACCESSORIES

TURN BRAND-NEW INTO ALL YOU

For more information and to shop online for Altima® Genuine Nissan Accessories, go to bit.ly/18altima-estore



Nissan Altima® 3.5 SL shown in Scarlet Ember with LED Fog Lights Upgrade Kit, Moonroof Wind Deflector, Splash Guards, Chrome Body Side Moldings, External Ground Lighting, and Rear Decklid Spoiler.

¹Covered by Nissan's Limited Warranty on Genuine Nissan Replacement Parts, Genuine NISMO® S-Tune Parts, and Genuine Nissan Accessories for the longer of 12 months/12,000 miles (whichever occurs first) or the remaining period under the 3-year/36,000-mile (whichever occurs first) Nissan New Vehicle Limited Warranty. Terms and conditions apply. See Warranty Information Booklet for details. ²Available services/features may be shown. Compatible connected device may be required. Only use services/

features and device when safe and legal to do so. Subject to GPS and wireless network availability and connection, and system/technology limitations. Text rates/data usage/subscription may apply. Some services/features provided by companies not within Nissan or its partners' or agents' control and may be discontinued at any time. For more information, see dealer, Owner's Manual, or NissanUSA.com/connect/important-information. ³State and local laws, regulations or ordinances may apply based on the location of the vehicle. ⁴Cargo and load capacity limited by weight and distribution. Always secure all cargo. ⁵Driving is serious business and requires your full attention. If you have to use the connected device while driving, exercise extreme caution at all times so full attention may be given to vehicle operation. External device not included. ⁶Late availability.

